



[Go to Product page](#)

Datasheet for ABIN357817

## anti-SULT1C4 antibody (N-Term)

### 1 Image

#### Overview

Quantity:	0.4 mL
Target:	SULT1C4
Binding Specificity:	N-Term
Reactivity:	Human
Host:	Rabbit
Clonality:	Polyclonal
Conjugate:	This SULT1C4 antibody is un-conjugated
Application:	Western Blotting (WB), Enzyme Immunoassay (EIA)

#### Product Details

Immunogen:	This antibody is generated from rabbits immunized with a KLH conjugated synthetic peptide selected from the N-terminal region of human SULT1C2.
Isotype:	Ig Fraction
Specificity:	This antibody detects SULT1C2 (N-term).
Purification:	Protein G Chromatography eluted with high and low pH buffers and neutralized immediately, followed by dialysis against PBS.

#### Target Details

Target:	SULT1C4
Alternative Name:	SULT1C4 / SULT1C2 ( <a href="#">SULT1C4 Products</a> )

## Target Details

---

**Background:** Sulfotransferase enzymes catalyze the sulfate conjugation of many hormones, neurotransmitters, drugs, and xenobiotic compounds. These cytosolic enzymes are different in their tissue distributions and substrate specificities. The gene structure (number and length of exons) is similar among family members. SULT1C2 belongs to the SULT1 subfamily, responsible for transferring a sulfo moiety from PAPS to phenol-containing compounds. SULT1C2 belongs to a SULT subfamily that shows specificity for hydroxyarylamines. SULT1C2 catalyzes the sulfonation of p-nitrophenol and N-hydroxy-2-acetylaminofluorene, but not dopamine. Synonyms: ST1C4, Sulfotransferase 1C2, Sulfotransferase 1C4

**Molecular Weight:** 35520 Da

**Gene ID:** 27233, 9606

**UniProt:** [O75897](#)

## Application Details

---

**Application Notes:** ELISA: 1/1,000. Western Blot: 1/100-1/500.  
Other applications not tested.  
Optimal dilutions are dependent on conditions and should be determined by the user.

**Restrictions:** For Research Use only

## Handling

---

**Format:** Liquid

**Concentration:** 0.25 mg/mL

**Buffer:** PBS with 0.09 % (W/V) Sodium Azide as preservative.

**Preservative:** Sodium azide

**Precaution of Use:** This product contains sodium azide: a POISONOUS AND HAZARDOUS SUBSTANCE which should be handled by trained staff only.

**Handling Advice:** Avoid repeated freezing and thawing.

**Storage:** 4 °C/-20 °C

**Storage Comment:** Store the antibody undiluted at 2-8 °C for one month or (in aliquots) at -20 °C for longer.

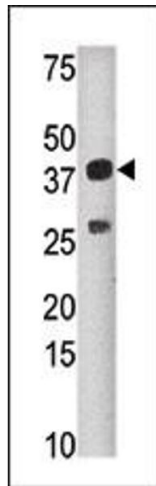


Image 1.