

Datasheet for ABIN357848

**anti-Junctophilin 3 antibody (Middle Region)****2** Images[Go to Product page](#)

## Overview

Quantity:	0.4 mL
Target:	Junctophilin 3 (JPH3)
Binding Specificity:	Middle Region
Reactivity:	Human, Mouse
Host:	Rabbit
Clonality:	Polyclonal
Conjugate:	This Junctophilin 3 antibody is un-conjugated
Application:	Western Blotting (WB), Immunohistochemistry (Paraffin-embedded Sections) (IHC (p)), Enzyme Immunoassay (EIA)

## Product Details

Immunogen:	This antibody is generated from rabbits immunized with a KLH conjugated synthetic peptide selected from the Center region of mouse Jph3.
Isotype:	Ig Fraction
Specificity:	This antibody detects Junctophilin 3 (Center).
Purification:	Protein G Chromatography, eluted with high and low pH buffers and neutralized immediately, followed by dialysis against PBS.

## Target Details

Target:	Junctophilin 3 (JPH3)
Alternative Name:	Junctophilin-3 / JPH3 ( <a href="#">JPH3 Products</a> )

## Target Details

**Background:** Junctional complexes between the plasma membrane and endoplasmic/sarcoplasmic reticulum are a common feature of all excitable cell types and mediate cross talk between cell surface and intracellular ion channels. Junctophilin 3 is a component of junctional complexes and is composed of a C-terminal hydrophobic segment spanning the endoplasmic/sarcoplasmic reticulum membrane and a remaining cytoplasmic domain that shows specific affinity for the plasma membrane. Synonyms: JP3, Junctophilin type 3, TNRC22, Trinucleotide repeat-containing gene 22 protein

**Molecular Weight:** 81229 Da

**Gene ID:** 57340, 10090

**UniProt:** [Q9ET77](#)

## Application Details

**Application Notes:** ELISA: 1/1,000. Western Blot: 1/50-1/100. Immunohistochemistry: 1/10-1/50.  
Other applications not tested.  
Optimal dilutions are dependent on conditions and should be determined by the user.

**Restrictions:** For Research Use only

## Handling

**Format:** Liquid

**Concentration:** 0.25 mg/mL

**Buffer:** PBS with 0.09 % (W/V) Sodium Azide as preservative.

**Preservative:** Sodium azide

**Precaution of Use:** This product contains sodium azide: a POISONOUS AND HAZARDOUS SUBSTANCE which should be handled by trained staff only.

**Handling Advice:** Avoid repeated freezing and thawing.

**Storage:** 4 °C/-20 °C

**Storage Comment:** Store the antibody undiluted at 2-8 °C for one month or (in aliquots) at -20 °C for longer.

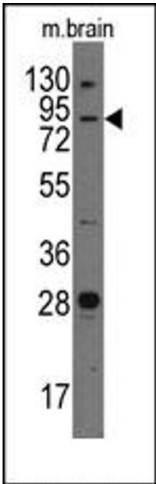


Image 1.

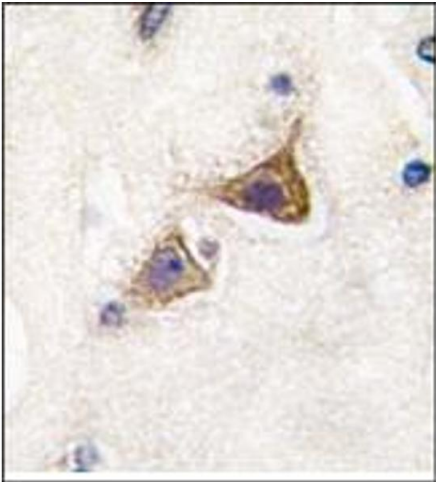


Image 2.