

Datasheet for ABIN357896
anti-SIGMAR1 antibody (N-Term)[Go to Product page](#)

1 Image

Overview

Quantity:	0.4 mL
Target:	SIGMAR1
Binding Specificity:	N-Term
Reactivity:	Human
Host:	Rabbit
Clonality:	Polyclonal
Conjugate:	This SIGMAR1 antibody is un-conjugated
Application:	Western Blotting (WB), Enzyme Immunoassay (EIA)

Product Details

Immunogen:	This antibody is generated from rabbits immunized with a KLH conjugated synthetic peptide selected from the N-terminal region of human OPR1.
Isotype:	Ig Fraction
Specificity:	This antibody detects OPR1 (N-term).
Purification:	Saturated Ammonium Sulfate (SAS) precipitation followed by dialysis against PBS.

Target Details

Target:	SIGMAR1
Alternative Name:	SIGMAR1 / OPR1 (SIGMAR1 Products)
Background:	OPR1 is a receptor protein that interacts with a variety of psychotomimetic drugs, including

Target Details

cocaine and amphetamines. The receptor is believed to play an important role in the cellular functions of various tissues associated with the endocrine, immune, and nervous systems. Synonyms: AAG8, Aging-associated gene 8 protein, SIG-1R, SR-BP, SR31747-binding protein, SRBP, Sigma 1-type opioid receptor, Sigma non-opioid intracellular receptor 1, Sigma1-receptor, Sigma1R

Molecular Weight: 25128 Da

Gene ID: 10280, 9606

UniProt: [Q99720](#)

Pathways: [SARS-CoV-2 Protein Interactome](#)

Application Details

Application Notes: ELISA: 1/1,000. Western Blot: 1/50-1/100.
Other applications not tested.
Optimal dilutions are dependent on conditions and should be determined by the user.

Restrictions: For Research Use only

Handling

Format: Liquid

Concentration: 0.25 mg/mL

Buffer: PBS with 0.09 % (W/V) Sodium Azide as preservative.

Preservative: Sodium azide

Precaution of Use: This product contains sodium azide: a POISONOUS AND HAZARDOUS SUBSTANCE which should be handled by trained staff only.

Handling Advice: Avoid repeated freezing and thawing.

Storage: 4 °C/-20 °C

Storage Comment: Store the antibody undiluted at 2-8 °C for one month or (in aliquots) at -20 °C for longer.

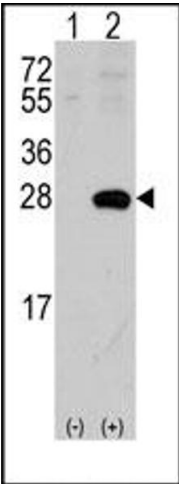


Image 1.