

Datasheet for ABIN357906

**anti-SLC16A1 antibody (Middle Region)**[Go to Product page](#)**1** Image

## Overview

Quantity:	0.4 mL
Target:	SLC16A1
Binding Specificity:	AA 207-236, Middle Region
Reactivity:	Human
Host:	Rabbit
Clonality:	Polyclonal
Conjugate:	This SLC16A1 antibody is un-conjugated
Application:	Western Blotting (WB), Enzyme Immunoassay (EIA)

## Product Details

Immunogen:	This antibody is generated from rabbits immunized with a KLH conjugated synthetic peptide between 207~236 amino acids from the Center region of Human SLC16A1. Genename: SLC16A1
Isotype:	Ig Fraction
Specificity:	This antibody detects SLC16A1 (Center).
Purification:	Saturated Ammonium Sulfate (SAS) precipitation followed by dialysis against PBS.

## Target Details

Target:	SLC16A1
Alternative Name:	SLC16A1 ( <a href="#">SLC16A1 Products</a> )

## Target Details

Background:	SLC16A1 is a monocarboxylate transporter (MCT1) that mediates the movement of lactate and pyruvate across cell membranes. Import and export of these substrates by tissues such as erythrocytes, muscle, intestine, and kidney are ascribed largely to the action of a proton-coupled MCT (Garcia et al., 1994 [PubMed 8124722]).Synonyms: MCT 1, MCT1, Monocarboxylate transporter 1, Solute carrier family 16 member 1
Molecular Weight:	53958 Da predicted from amino acid sequence. Theoretical pI: 8.91 Da
Gene ID:	6566, 9606
UniProt:	<a href="#">P53985</a>
Pathways:	<a href="#">Warburg Effect</a>

## Application Details

Application Notes:	ELISA: 1/1,000. Western Blot: 1/50-1/100. Other applications not tested. Optimal dilutions are dependent on conditions and should be determined by the user.
Restrictions:	For Research Use only

## Handling

Format:	Liquid
Concentration:	0.25 mg/mL
Buffer:	PBS with 0.09 % (W/V) Sodium Azide as preservative.
Preservative:	Sodium azide
Precaution of Use:	This product contains sodium azide: a POISONOUS AND HAZARDOUS SUBSTANCE which should be handled by trained staff only.
Handling Advice:	Avoid repeated freezing and thawing.
Storage:	4 °C/-20 °C
Storage Comment:	Store the antibody undiluted at 2-8 °C for one month or (in aliquots) at -20 °C for longer.

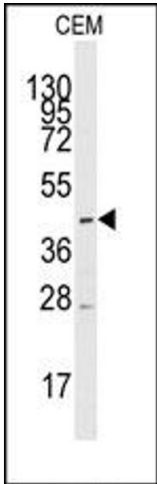


Image 1.