

Datasheet for ABIN357918
anti-ZIC3 antibody (N-Term)

2 Images

[Go to Product page](#)

Overview

Quantity:	0.4 mL
Target:	ZIC3
Binding Specificity:	AA 11-40, N-Term
Reactivity:	Human
Host:	Rabbit
Clonality:	Polyclonal
Conjugate:	This ZIC3 antibody is un-conjugated
Application:	Western Blotting (WB), Immunohistochemistry (Paraffin-embedded Sections) (IHC (p)), Enzyme Immunoassay (EIA)

Product Details

Immunogen:	This ZIC3 antibody is generated from rabbits immunized with a KLH conjugated synthetic peptide between 11-40 amino acids from the N-terminal region of human ZIC3.
Isotype:	Ig Fraction
Specificity:	This antibody detects ZIC3 (N-term). Predicted to cross react with Mouse (100 % Antigen Homology).
Purification:	Saturated Ammonium Sulfate (SAS) precipitation followed by dialysis against PBS.

Target Details

Target:	ZIC3
Alternative Name:	ZIC3 (ZIC3 Products)

Target Details

Background: ZIC3 is a member of the ZIC family of C2H2-type zinc finger proteins. This nuclear protein probably functions as a transcription factor in early stages of left-right body axis formation. Mutations in the gene encoding ZIC3 cause X-linked visceral heterotaxy, which includes congenital heart disease and left-right axis defects in organs. Synonyms: Zinc finger protein ZIC 3, Zinc finger protein of the cerebellum 3

Molecular Weight: 50569 Da

Gene ID: 7547, 9606

UniProt: [O60481](#)

Application Details

Application Notes: ELISA: 1/1,000. Western Blot: 1/50-1/100. Immunohistochemistry: 1/10-1/50.
Other applications not tested.
Optimal dilutions are dependent on conditions and should be determined by the user.

Restrictions: For Research Use only

Handling

Format: Liquid

Concentration: 0.25 mg/mL

Buffer: PBS with 0.09 % (W/V) Sodium Azide as preservative.

Preservative: Sodium azide

Precaution of Use: This product contains sodium azide: a POISONOUS AND HAZARDOUS SUBSTANCE which should be handled by trained staff only.

Handling Advice: Avoid repeated freezing and thawing.

Storage: 4 °C/-20 °C

Storage Comment: Store the antibody undiluted at 2-8 °C for one month or (in aliquots) at -20 °C for longer.

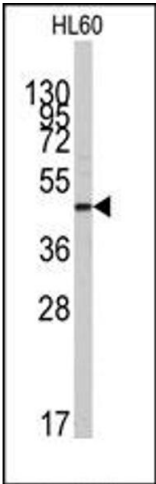


Image 1.

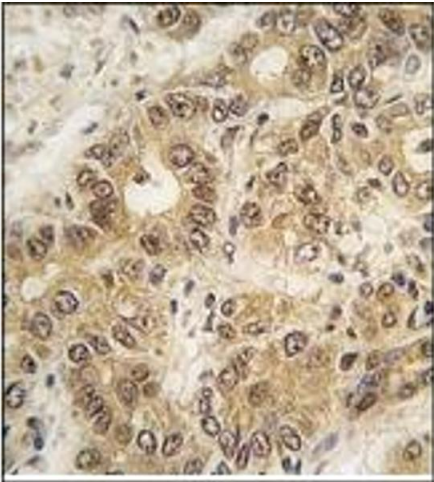


Image 2.