

Datasheet for ABIN357966

**anti-PPAP2C antibody (C-Term)**[Go to Product page](#)**1** Image

## Overview

Quantity:	0.4 mL
Target:	PPAP2C
Binding Specificity:	C-Term
Reactivity:	Human
Host:	Rabbit
Clonality:	Polyclonal
Conjugate:	This PPAP2C antibody is un-conjugated
Application:	Western Blotting (WB), Enzyme Immunoassay (EIA)

## Product Details

Immunogen:	This antibody is generated from rabbits immunized with a KLH conjugated synthetic peptide selected from the C-terminal region of human PPAP2C.
Isotype:	Ig Fraction
Specificity:	This antibody detects PPAP2C (C-term).
Purification:	Saturated Ammonium Sulfate (SAS) precipitation followed by dialysis against PBS.

## Target Details

Target:	PPAP2C
Alternative Name:	PPAP2C / LPP2 ( <a href="#">PPAP2C Products</a> )
Background:	PPAP2C is a member of the phosphatidic acid phosphatase (PAP) family. PAPs convert

## Target Details

phosphatidic acid to diacylglycerol, and function in de novo synthesis of glycerolipids as well as in receptor-activated signal transduction mediated by phospholipase D. This protein is similar to phosphatidic acid phosphatase type 2A (PPAP2A) and type 2B (PPAP2B). All three proteins contain 6 transmembrane regions, and a consensus N-glycosylation site. This protein has been shown to possess membrane associated PAP activity. Synonyms: Lipid phosphate phosphohydrolase 2, PAP2-gamma, Phosphatidate phosphohydrolase type 2c, Phosphatidic acid phosphatase 2c

Molecular Weight: 32574 Da

Gene ID: 8612, 9606

UniProt: [O43688](#)

## Application Details

Application Notes: ELISA: 1/1,000. Western Blot: 1/50-1/100.  
Other applications not tested.  
Optimal dilutions are dependent on conditions and should be determined by the user.

Restrictions: For Research Use only

## Handling

Format: Liquid

Concentration: 0.25 mg/mL

Buffer: PBS with 0.09 % (W/V) Sodium Azide as preservative.

Preservative: Sodium azide

Precaution of Use: This product contains sodium azide: a POISONOUS AND HAZARDOUS SUBSTANCE which should be handled by trained staff only.

Handling Advice: Avoid repeated freezing and thawing.

Storage: 4 °C/-20 °C

Storage Comment: Store the antibody undiluted at 2-8 °C for one month or (in aliquots) at -20 °C for longer.

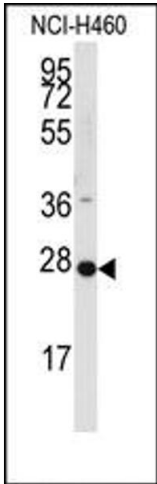


Image 1.