

Datasheet for ABIN358008

anti-PFDN6 antibody (C-Term, N-Term)[Go to Product page](#)**1** Image

Overview

Quantity:	0.4 mL
Target:	PFDN6
Binding Specificity:	C-Term, N-Term
Reactivity:	Human
Host:	Rabbit
Clonality:	Polyclonal
Conjugate:	This PFDN6 antibody is un-conjugated
Application:	Western Blotting (WB), Enzyme Immunoassay (EIA)

Product Details

Immunogen:	This antibody is generated from rabbits immunized with a KLH conjugated synthetic peptide selected from the C-terminal region of human PFDN6.
Isotype:	Ig Fraction
Specificity:	This antibody detects PFDN6 (N-term).
Purification:	Saturated Ammonium Sulfate (SAS) precipitation followed by dialysis against PBS.

Target Details

Target:	PFDN6
Alternative Name:	PFDN6 / HKE2 (PFDN6 Products)
Background:	PFDN6 binds specifically to cytosolic chaperonin (c-CPN) and transfers target proteins to it.

Target Details

This protein also binds to nascent polypeptide chain and promotes folding in an environment in which there are many competing pathways for nonnative proteins. Synonyms: Ke2, PFD6, Prefoldin subunit 6

Molecular Weight: 14583 Da

Gene ID: 10471, 9606

UniProt: [O15212](#)

Pathways: [Unfolded Protein Response](#)

Application Details

Application Notes: ELISA: 1/1,000. Western Blot: 1/50-1/100.
Other applications not tested.
Optimal dilutions are dependent on conditions and should be determined by the user.

Restrictions: For Research Use only

Handling

Format: Liquid

Concentration: 0.25 mg/mL

Buffer: PBS with 0.09 % (W/V) Sodium Azide as preservative.

Preservative: Sodium azide

Precaution of Use: This product contains sodium azide: a POISONOUS AND HAZARDOUS SUBSTANCE which should be handled by trained staff only.

Handling Advice: Avoid repeated freezing and thawing.

Storage: 4 °C/-20 °C

Storage Comment: Store the antibody undiluted at 2-8 °C for one month or (in aliquots) at -20 °C for longer.

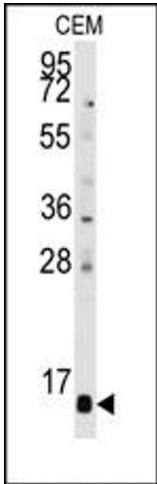


Image 1.