

Datasheet for ABIN358016
anti-SNRPC antibody (C-Term)[Go to Product page](#)

1 Image

Overview

Quantity:	0.4 mL
Target:	SNRPC
Binding Specificity:	C-Term
Reactivity:	Human
Host:	Rabbit
Clonality:	Polyclonal
Conjugate:	This SNRPC antibody is un-conjugated
Application:	Western Blotting (WB), Enzyme Immunoassay (EIA)

Product Details

Immunogen:	This antibody is generated from rabbits immunized with a KLH conjugated synthetic peptide selected from the C-terminal region of human SNRPC.
Isotype:	Ig Fraction
Specificity:	This antibody detects SNRPC (C-term).
Purification:	Saturated Ammonium Sulfate (SAS) precipitation followed by dialysis against PBS.

Target Details

Target:	SNRPC
Abstract:	SNRPC Products
Background:	SNRPC is associated with snRNP U1. Synonyms: U1 small nuclear ribonucleoprotein C, U1

Target Details

	snRNP C
Molecular Weight:	17394 Da
Gene ID:	6631, 9606
UniProt:	P09234
Pathways:	Ribonucleoprotein Complex Subunit Organization

Application Details

Application Notes:	ELISA: 1/1,000. Western Blot: 1/50-1/100. Other applications not tested. Optimal dilutions are dependent on conditions and should be determined by the user.
Restrictions:	For Research Use only

Handling

Format:	Liquid
Concentration:	0.25 mg/mL
Buffer:	PBS with 0.09 % (W/V) Sodium Azide as preservative.
Preservative:	Sodium azide
Precaution of Use:	This product contains sodium azide: a POISONOUS AND HAZARDOUS SUBSTANCE which should be handled by trained staff only.
Handling Advice:	Avoid repeated freezing and thawing.
Storage:	4 °C/-20 °C
Storage Comment:	Store the antibody undiluted at 2-8 °C for one month or (in aliquots) at -20 °C for longer.

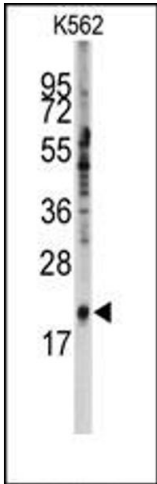


Image 1.