

Datasheet for ABIN358168
anti-PKMYT1 antibody (pThr495)

2 Images

[Go to Product page](#)

Overview

Quantity:	0.4 mL
Target:	PKMYT1
Binding Specificity:	pThr495
Reactivity:	Human
Host:	Rabbit
Clonality:	Polyclonal
Conjugate:	This PKMYT1 antibody is un-conjugated
Application:	Western Blotting (WB), Immunohistochemistry (Paraffin-embedded Sections) (IHC (p)), Enzyme Immunoassay (EIA)

Product Details

Immunogen:	This antibody is generated from rabbits immunized with a KLH conjugated synthetic phosphopeptide corresponding to amino acid residues surrounding T495 of human MYT1.
Isotype:	Ig Fraction
Specificity:	This antibody detects MYT1 pThr495.
Purification:	Protein G affinity chromatography. Then, the antibody fraction is peptide affinity purified in a 2-step procedure with control and phosphorylated peptides. The phospho-specific antibody is eluted with high and low pH buffers and neutralized immediately, followed by dialysis against PBS.

Target Details

Target:	PKMYT1
Alternative Name:	PKMYT1 (PKMYT1 Products)
Background:	<p>The protein encoded by this gene is a member of the serine/threonine protein kinase family. This kinase preferentially phosphorylates and inactivates cell division cycle 2 protein (CDC2), and thus negatively regulates cell cycle G2/M transition. This kinase is associated with the membrane throughout the cell cycle. Its activity is highly regulated during the cell cycle. Protein kinases AKT1/PKB and PLK (Polo-like kinase) have been shown to phosphorylate and regulate the activity of this kinase. Alternatively spliced transcript variants encoding distinct isoforms have been reported. Synonyms: MYT1, Membrane-associated tyrosine- and threonine-specific cdc2-inhibitory kinase, Myt1 kinase</p>
Molecular Weight:	54521 Da
Gene ID:	9088, 9606
UniProt:	Q99640
Pathways:	Mitotic G1-G1/S Phases, M Phase

Application Details

Application Notes:	<p>ELISA: 1/1,000. Western Blot: 1/100-1/500. Dot Blot: 1/500. Immunohistochemistry: 1/50 approx. 1/100.</p> <p>Other applications not tested.</p> <p>Optimal dilutions are dependent on conditions and should be determined by the user.</p>
Restrictions:	For Research Use only

Handling

Format:	Liquid
Concentration:	0.25 mg/mL
Buffer:	PBS with 0.09 % (W/V) Sodium Azide as preservative.
Preservative:	Sodium azide
Precaution of Use:	This product contains sodium azide: a POISONOUS AND HAZARDOUS SUBSTANCE which should be handled by trained staff only.
Handling Advice:	Avoid repeated freezing and thawing.

Handling

Storage:	4 °C/-20 °C
Storage Comment:	Store the antibody undiluted at 2-8 °C for one month or (in aliquots) at-20 °C for longer.

Images

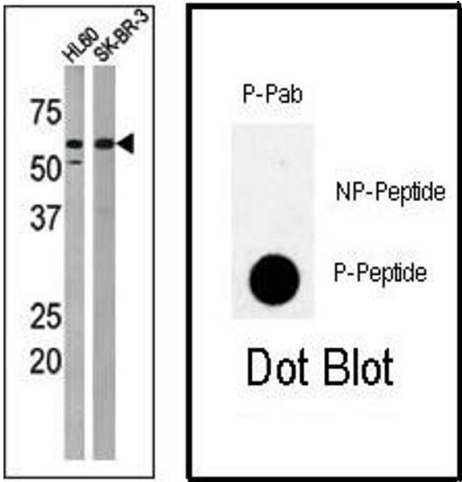


Image 1.

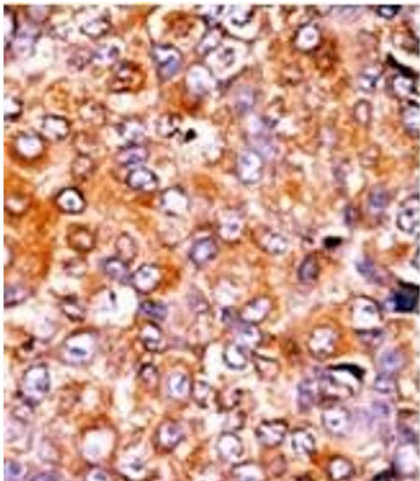


Image 2.