

Datasheet for ABIN358251
anti-WEE1 antibody (pSer123)



[Go to Product page](#)

2 Images

Overview

Quantity:	0.4 mL
Target:	WEE1
Binding Specificity:	pSer123
Reactivity:	Human
Host:	Rabbit
Clonality:	Polyclonal
Conjugate:	This WEE1 antibody is un-conjugated
Application:	Immunohistochemistry (Paraffin-embedded Sections) (IHC (p)), Enzyme Immunoassay (EIA)

Product Details

Immunogen:	This antibody is generated from rabbits immunized with a KLH conjugated synthetic phosphopeptide corresponding to amino acid residues surrounding S123 of human WEE1
Isotype:	Ig Fraction
Specificity:	This antibody detects WEE1 pSer123.
Purification:	Protein G Affinity Chromatography. Then, the antibody fraction is peptide affinity purified in a 2-step procedure with control and phosphorylated peptides. The phospho-specific antibody is eluted with high and low pH buffers and neutralized immediately, followed by dialysis against PBS.

Target Details

Target:	WEE1
---------	------

Target Details

Alternative Name:	WEE1 / Wee1-Like Protein Kinase (WEE1 Products)
Background:	This gene encodes a nuclear protein, which is a tyrosine kinase belonging to the Ser/Thr family of protein kinases. This protein catalyzes the inhibitory tyrosine phosphorylation of CDC2/cyclin B kinase, and appears to coordinate the transition between DNA replication and mitosis by protecting the nucleus from cytoplasmically activated CDC2 kinase.Synonyms: WEE1hu, Wee1A kinase
Molecular Weight:	71597 Da
Gene ID:	7465, 9606
UniProt:	P30291
Pathways:	Cell Division Cycle , Mitotic G1-G1/S Phases , M Phase

Application Details

Application Notes:	ELISA: 1/1,000. Immunohistochemistry: 1/50-1/100. Dot Blot: 1/500. Other applications not tested. Optimal dilutions are dependent on conditions and should be determined by the user.
Restrictions:	For Research Use only

Handling

Format:	Liquid
Concentration:	0.25 mg/mL
Buffer:	PBS with 0.09 % (W/V) Sodium Azide as preservative.
Preservative:	Sodium azide
Precaution of Use:	This product contains sodium azide: a POISONOUS AND HAZARDOUS SUBSTANCE which should be handled by trained staff only.
Handling Advice:	Avoid repeated freezing and thawing.
Storage:	4 °C/-20 °C
Storage Comment:	Store the antibody undiluted at 2-8 °C for one month or (in aliquots) at-20 °C for longer.

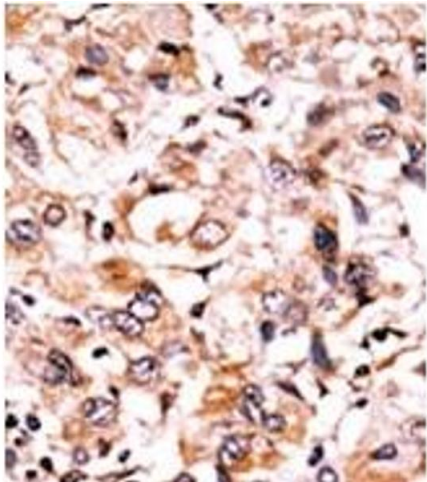


Image 1.

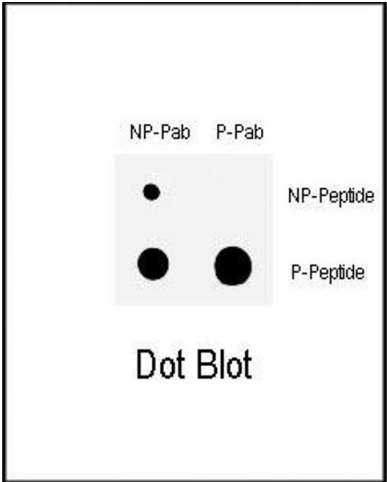


Image 2.