

Datasheet for ABIN358586

anti-BACE2 antibody (C-Term, Isoform C)[Go to Product page](#)**2** Images

Overview

Quantity:	0.4 mL
Target:	BACE2
Binding Specificity:	C-Term, Isoform C
Reactivity:	Human
Host:	Rabbit
Clonality:	Polyclonal
Conjugate:	This BACE2 antibody is un-conjugated
Application:	Western Blotting (WB), Immunohistochemistry (Paraffin-embedded Sections) (IHC (p)), Enzyme Immunoassay (EIA)

Product Details

Immunogen:	KLH conjugated synthetic peptide selected from the C-terminal region of human BACE2C
Isotype:	Ig Fraction
Specificity:	This antibody reacts to BACE2C.
Purification:	Affinity chromatography on Protein G

Target Details

Target:	BACE2
Alternative Name:	BACE2 (BACE2 Products)
Background:	Amyloid-beta peptide aggregation is a signature of Alzheimer disease and a frequent

Target Details

complication of adult Down syndrome patients. Amyloid-beta is generated by proteolytic processing of the amyloid precursor protein (APP) by beta- and gamma-secretase at the N and C termini, respectively. Presenilin-1 is involved in the gamma-secretase activity. BACE is a transmembrane aspartyl protease with beta-secretase activity. BACE2, also termed ALP56 has 2 pepsin-like active centers, a signal sequence, a propeptide, and a long C-terminal extension including a transmembrane domain, with expression in a wide array of tissues. Northern blot analysis revealed low expression of 2.0- and 2.6-kb BACE2 transcripts in most fetal and adult tissues, with higher expression in adult colon, kidney, pancreas, placenta, prostate, stomach, and trachea. Low levels were also detected in brain, with somewhat higher expression in medulla and spinal cord. In situ hybridization analysis of rat brain found low-level BACE2 expression in contrast to BACE expression. The BACE2 expression pattern does not appear to be consistent with that of a beta-secretase. BACE2 has been mapped to 21q22.3, within the Down syndrome critical region. Synonyms: AEPLC, ALP56, ASP1, ASP21, Aspartic-like protease 56 kDa, Aspartyl protease 1, Beta-secretase 2, Beta-site APP-cleaving enzyme 2, Down region aspartic protease, Memapsin-1, Membrane-associated aspartic protease 1

Gene ID: 25825, 9606

UniProt: [Q9Y5Z0](#)

Application Details

Application Notes: ELISA: 1/1,000. Western blot: 1/100 - 1/500. Immunohistochemistry on paraffin sections: 1/50 - 1/100.
Other applications not tested.
Optimal dilutions are dependent on conditions and should be determined by the user.

Restrictions: For Research Use only

Handling

Format: Liquid

Concentration: 0.25 mg/mL

Buffer: PBS with 0.09 % (W/V) sodium azide

Preservative: Sodium azide

Precaution of Use: This product contains sodium azide: a POISONOUS AND HAZARDOUS SUBSTANCE which should be handled by trained staff only.

Handling

Handling Advice:	Avoid repeated freezing and thawing.
Storage:	4 °C/-20 °C
Storage Comment:	Store the antibody undiluted at 2-8 °C for one month or (in aliquots) at-20 °C for longer.

Images

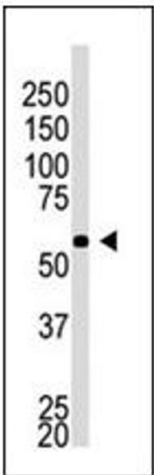


Image 1.

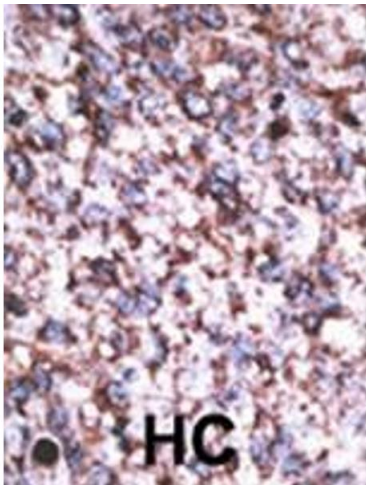


Image 2.