

Datasheet for ABIN358601
anti-ABCB5 antibody (N-Term)[Go to Product page](#)

2 Images

Overview

Quantity:	0.4 mL
Target:	ABCB5
Binding Specificity:	N-Term
Reactivity:	Human
Host:	Rabbit
Clonality:	Polyclonal
Conjugate:	This ABCB5 antibody is un-conjugated
Application:	Western Blotting (WB), Enzyme Immunoassay (EIA)

Product Details

Immunogen:	This antibody is generated from rabbits immunized with a KLH conjugated synthetic peptide selected from the N-terminal region of human ABCB5.
Isotype:	Ig Fraction
Specificity:	This antibody recognizes ABCB5 (N-term).
Cross-Reactivity (Details):	Species reactivity (tested):Human.
Purification:	Prepared by Saturated Ammonium Sulfate (SAS) precipitation followed by dialysis against PBS.

Target Details

Target:	ABCB5
Alternative Name:	ABCB5 (ABCB5 Products)

Target Details

Background: ABCB5 is a plasma membrane transporter able to mediate efflux from cells of the rhodamine dye and of the therapeutic drug doxorubicin. ABCB5 is also responsible for the resistance to doxorubicin of a subset of malignant melanomas. ABCB5 has more recently been identified as a marker for human malignant-melanoma-initiating cells. Synonyms: ATP-binding cassette sub-family B member 5

Molecular Weight: 89831 Da

Gene ID: 340273, 9606

UniProt: [Q2M3G0](#)

Application Details

Application Notes: ELISA: 1/1,000. Western blotting: 1/50-1/100. Flow Cytometry.
Other applications not tested.
Optimal dilutions are dependent on conditions and should be determined by the user.

Restrictions: For Research Use only

Handling

Format: Liquid

Concentration: 0.25 mg/mL

Buffer: PBS with 0.09 % (W/V) Sodium Azide as preservative.

Preservative: Sodium azide

Precaution of Use: This product contains sodium azide: a POISONOUS AND HAZARDOUS SUBSTANCE which should be handled by trained staff only.

Handling Advice: Avoid repeated freezing and thawing.

Storage: 4 °C/-20 °C

Storage Comment: Store the antibody undiluted at 2-8 °C for one month or (in aliquots) at -20 °C for longer.

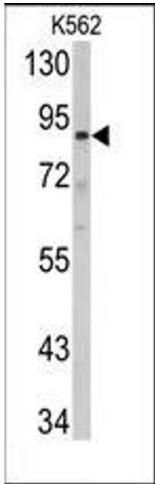


Image 1.

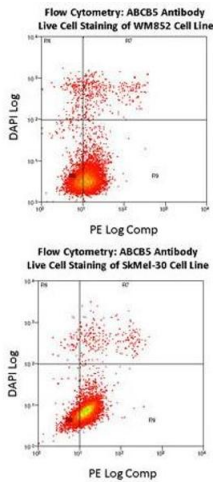


Image 2.