

Datasheet for ABIN358626
anti-JAG2 antibody (C-Term)[Go to Product page](#)

2 Images

Overview

Quantity:	0.4 mL
Target:	JAG2
Binding Specificity:	C-Term
Reactivity:	Human
Host:	Rabbit
Clonality:	Polyclonal
Conjugate:	This JAG2 antibody is un-conjugated
Application:	Western Blotting (WB), Immunohistochemistry (Paraffin-embedded Sections) (IHC (p)), Enzyme Immunoassay (EIA)

Product Details

Immunogen:	This antibody is generated from rabbits immunized with a KLH conjugated synthetic peptide selected from the C-terminal region of human JAG2.
Isotype:	Ig Fraction
Specificity:	This antibody reacts to Jagged2 (JAG2).
Purification:	Protein G column, eluted with high and low pH buffers and neutralized immediately, followed by dialysis against PBS

Target Details

Target:	JAG2
Alternative Name:	Jagged-2 / JAG2 (JAG2 Products)

Target Details

Background:	The Notch signaling pathway is an intercellular signaling mechanism that is essential for proper embryonic development. Members of the Notch gene family encode transmembrane receptors that are critical for various cell fate decisions. JAG2 is one of several ligands that activate Notch and related receptors.Synonyms: hJ2
Gene ID:	3714, 9606
UniProt:	Q9Y219
Pathways:	Notch Signaling , Sensory Perception of Sound

Application Details

Application Notes:	ELISA: 1/1,000. Western Blot: 1/100 - 1/500. Immunohistochemistry: 1/50 - 1/100. Other applications not tested. Optimal dilutions are dependent on conditions and should be determined by the user.
Restrictions:	For Research Use only

Handling

Format:	Liquid
Concentration:	0.25 mg/mL
Buffer:	PBS with 0.09 % (W/V) sodium azide
Preservative:	Sodium azide
Precaution of Use:	This product contains sodium azide: a POISONOUS AND HAZARDOUS SUBSTANCE which should be handled by trained staff only.
Handling Advice:	Avoid repeated freezing and thawing.
Storage:	4 °C/-20 °C
Storage Comment:	Store the antibody undiluted at 2-8 °C for one month or (in aliquots) at -20 °C for longer.

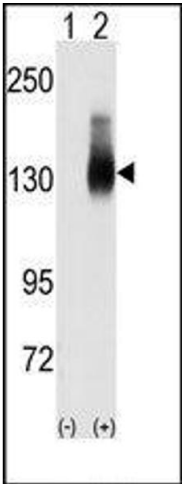


Image 1.

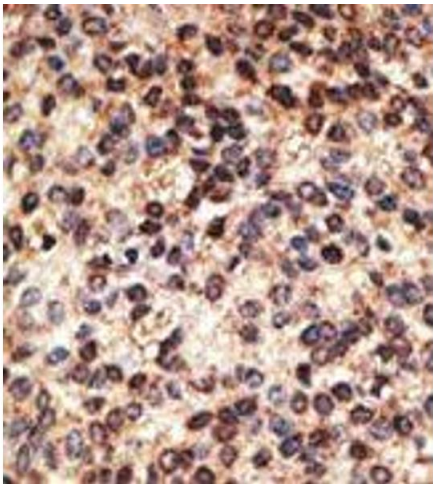


Image 2.