



[Go to Product page](#)

Datasheet for ABIN358636  
**anti-LRP6 antibody (C-Term)**

2 Images

Overview

Quantity:	0.4 mL
Target:	LRP6
Binding Specificity:	C-Term
Reactivity:	Human
Host:	Rabbit
Clonality:	Polyclonal
Conjugate:	This LRP6 antibody is un-conjugated
Application:	Western Blotting (WB), Immunohistochemistry (Paraffin-embedded Sections) (IHC (p)), Enzyme Immunoassay (EIA)

Product Details

Immunogen:	This antibody is generated from rabbits immunized with a KLH conjugated synthetic peptide selected from the C-terminal region of human LRP6.
Isotype:	Ig Fraction
Specificity:	This antibody reacts to LRP6.
Purification:	Protein G column, eluted with high and low pH buffers and neutralized immediately, followed by dialysis against PBS

Target Details

Target:	LRP6
Alternative Name:	LRP6 ( <a href="#">LRP6 Products</a> )

## Target Details

---

**Background:** LRP6 is essential for the Wnt/beta catenin signaling pathway, probably by acting as a coreceptor together with Frizzled for Wnt. It is a specific, high-affinity receptor for DKK1 and DKK2, but not DKK3. The interaction with DKK1 blocks LRP6-mediated Wnt/beta catenin signaling via LRP6 removal via Kremen proteins-mediated endocytosis. Synonyms: LRP-6, Low-density lipoprotein receptor-related protein 6

**Gene ID:** 4040, 9606

**UniProt:** [O75581](#)

**Pathways:** [WNT Signaling, Tube Formation](#)

## Application Details

---

**Application Notes:** ELISA: 1/1,000. Western blot: 1/100 - 1/500. Immunohistochemistry: 1/10 - 1/50.  
Other applications not tested.  
Optimal dilutions are dependent on conditions and should be determined by the user.

**Restrictions:** For Research Use only

## Handling

---

**Format:** Liquid

**Concentration:** 0.25 mg/mL

**Buffer:** PBS with 0.09 % (W/V) sodium azide

**Preservative:** Sodium azide

**Precaution of Use:** This product contains sodium azide: a POISONOUS AND HAZARDOUS SUBSTANCE which should be handled by trained staff only.

**Handling Advice:** Avoid repeated freezing and thawing.

**Storage:** 4 °C/-20 °C

**Storage Comment:** Store the antibody undiluted at 2-8 °C for one month or (in aliquots) at -20 °C for longer.

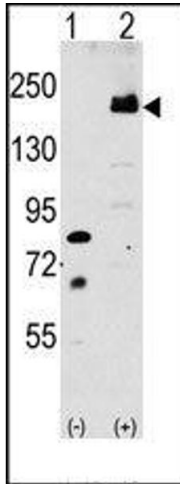


Image 1.

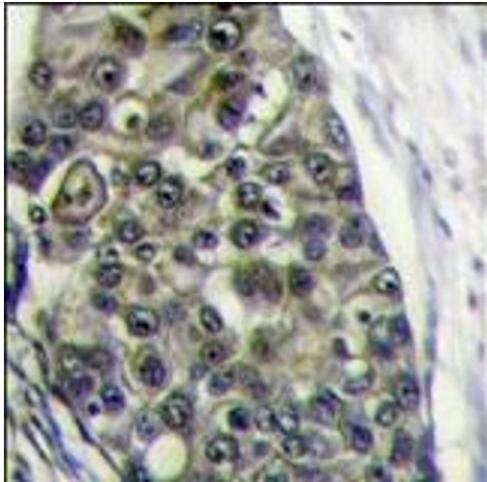


Image 2.