

Datasheet for ABIN358653
anti-MAGEB2 antibody (N-Term)[Go to Product page](#)

2 Images

Overview

| | |
|----------------------|--|
| Quantity: | 0.4 mL |
| Target: | MAGEB2 |
| Binding Specificity: | N-Term |
| Reactivity: | Human |
| Host: | Rabbit |
| Clonality: | Polyclonal |
| Conjugate: | This MAGEB2 antibody is un-conjugated |
| Application: | Western Blotting (WB), Immunohistochemistry (Paraffin-embedded Sections) (IHC (p)), Enzyme Immunoassay (EIA) |

Product Details

| | |
|---------------|--|
| Immunogen: | This antibody is generated from rabbits immunized with a KLH conjugated synthetic peptide selected from the N-terminal region of human MAGEB2. |
| Isotype: | Ig Fraction |
| Specificity: | This antibody reacts to MAGEB2. |
| Purification: | Protein G column, eluted with high and low pH buffers and neutralized immediately, followed by dialysis against PBS |

Target Details

| | |
|-------------------|---|
| Target: | MAGEB2 |
| Alternative Name: | MAGE-B2 (MAGEB2 Products) |

Target Details

Background: MAGEB2 is a member of the MAGEB gene family. The members of this family have their entire coding sequences located in the last exon, and the encoded proteins show 50 to 68 % sequence identity to each other. The promoters and first exons of the MAGEB genes show considerable variability, suggesting that the existence of this gene family enables the same function to be expressed under different transcriptional controls. This gene is localized in the DSS (dosage-sensitive sex reversal) critical region. It is expressed in testis and placenta, and in a significant fraction of tumors of various histological types. The MAGEB genes are clustered on chromosome Xp22-p21. Synonyms: Cancer/testis antigen 3.2, DSS-AHC critical interval MAGE superfamily 6, MAGE XP-2 antigen, MAGEB2, Melanoma-associated antigen B2

Gene ID: 4113

NCBI Accession: [NP_002355](#)

UniProt: [O15479](#)

Application Details

Application Notes: ELISA: 1/1,000. Western blotting: 1/50 - 1/100. Immunohistochemistry: 1/50 - 1/100.
Other applications not tested.
Optimal dilutions are dependent on conditions and should be determined by the user.

Restrictions: For Research Use only

Handling

Format: Liquid

Concentration: 0.25 mg/mL

Buffer: PBS with 0.09 % (W/V) sodium azide

Preservative: Sodium azide

Precaution of Use: This product contains sodium azide: a POISONOUS AND HAZARDOUS SUBSTANCE which should be handled by trained staff only.

Handling Advice: Avoid repeated freezing and thawing.

Storage: 4 °C/-20 °C

Storage Comment: Store the antibody undiluted at 2-8 °C for one month or (in aliquots) at -20 °C for longer.

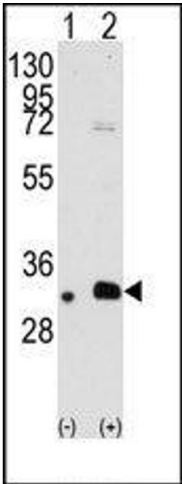


Image 1.

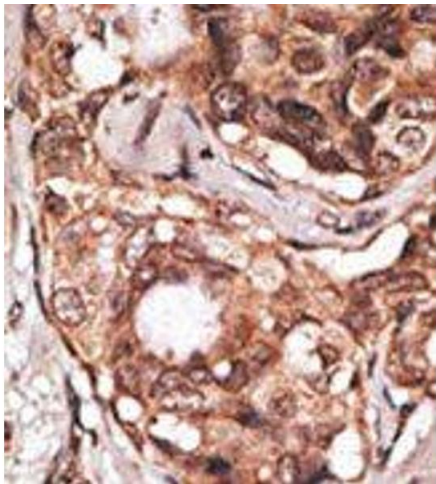


Image 2.