

Datasheet for ABIN358656
anti-MAGEC1 antibody (C-Term)

2 Images

[Go to Product page](#)

Overview

Quantity:	0.4 mL
Target:	MAGEC1
Binding Specificity:	C-Term
Reactivity:	Human
Host:	Rabbit
Clonality:	Polyclonal
Conjugate:	This MAGEC1 antibody is un-conjugated
Application:	Western Blotting (WB), Immunohistochemistry (Paraffin-embedded Sections) (IHC (p)), Enzyme Immunoassay (EIA)

Product Details

Immunogen:	This antibody is generated from rabbits immunized with a KLH conjugated synthetic peptide selected from the C-terminal region of human MAGEC1.
Isotype:	Ig Fraction
Specificity:	This antibody reacts to MAGEC1.
Purification:	Protein G column, eluted with high and low pH buffers and neutralized immediately, followed by dialysis against PBS

Target Details

Target:	MAGEC1
Alternative Name:	MAGE-C1 (MAGEC1 Products)

Target Details

Background: MAGEC1 is a member of the melanoma antigen gene (MAGE) family. The proteins of this family are tumor-specific antigens that can be recognized by autologous cytolytic T lymphocytes. This protein contains a large number of unique short repetitive sequences in front of the MAGE-homologous sequence, thus is about 800 residues longer than the other MAGE proteins. This gene is expressed in a significant proportion of tumors of various histological types, whereas it is silent in normal tissues, except testis. The function of this gene is unknown. Synonyms: Cancer/testis antigen 7.1, MAGEC1, Melanoma-associated antigen C1

Gene ID: 9947, 9606

UniProt: [O60732](#)

Application Details

Application Notes: ELISA: 1/1,000. Immunohistochemistry: 1/50 - 1/100. Western Blot: 1/100 - 1/500.
Other applications not tested.
Optimal dilutions are dependent on conditions and should be determined by the user.

Restrictions: For Research Use only

Handling

Format: Liquid

Concentration: 0.25 mg/mL

Buffer: PBS with 0.09 % (W/V) sodium azide

Preservative: Sodium azide

Precaution of Use: This product contains sodium azide: a POISONOUS AND HAZARDOUS SUBSTANCE which should be handled by trained staff only.

Handling Advice: Avoid repeated freezing and thawing.

Storage: 4 °C/-20 °C

Storage Comment: Store the antibody undiluted at 2-8 °C for one month or (in aliquots) at -20 °C for longer.

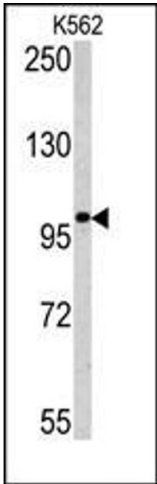


Image 1.

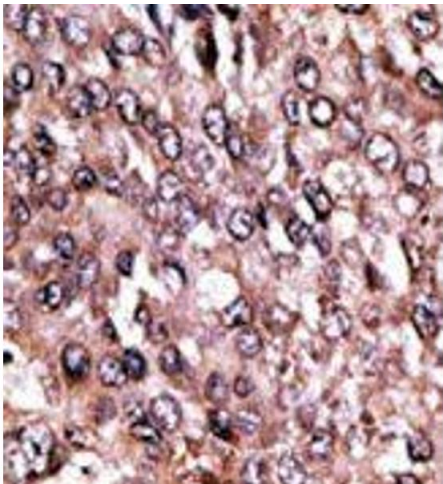


Image 2.