



[Go to Product page](#)

Datasheet for ABIN358690

## anti-MMP17 antibody (Middle Region)

### 2 Images

#### Overview

Quantity:	0.4 mL
Target:	MMP17
Binding Specificity:	Middle Region
Reactivity:	Human
Host:	Rabbit
Clonality:	Polyclonal
Conjugate:	This MMP17 antibody is un-conjugated
Application:	Western Blotting (WB), Immunohistochemistry (Paraffin-embedded Sections) (IHC (p)), Enzyme Immunoassay (EIA)

#### Product Details

Immunogen:	This antibody is generated from rabbits immunized with a KLH conjugated synthetic peptide selected from the center region of human MMP17.
Isotype:	Ig Fraction
Specificity:	This antibody reacts to MMP17.
Purification:	Protein G column, eluted with high and low pH buffers and neutralized immediately, followed by dialysis against PBS

#### Target Details

Target:	MMP17
Alternative Name:	MMP-17 ( <a href="#">MMP17 Products</a> )

## Target Details

---

**Background:** Proteins of the matrix metalloproteinase (MMP) family are involved in the breakdown of extracellular matrix in normal physiological processes, such as embryonic development, reproduction, and tissue remodeling, as well as in disease processes, such as arthritis and metastasis. Most MMPs are secreted as inactive proproteins which are activated when cleaved by extracellular proteinases. MMP17 is considered a member of the membrane-type MMP (MT-MMP) subfamily. However, this protein is unique among the MT-MMPs in that it is a GPI-anchored protein rather than a transmembrane protein. The protein activates MMP-2 by cleavage. Synonyms: MMP17, MT4MMP, Matrix metalloproteinase-17, Membrane-type matrix metalloproteinase 4

**Gene ID:** 4326, 5874

**UniProt:** [Q9ULZ9](#)

## Application Details

---

**Application Notes:** ELISA: 1/1,000. Western Blot: 1/50 - 1/200. Immunohistochemistry: 1/50 - 1/100.  
Other applications not tested.  
Optimal dilutions are dependent on conditions and should be determined by the user.

**Restrictions:** For Research Use only

## Handling

---

**Format:** Liquid

**Concentration:** 0.25 mg/mL

**Buffer:** PBS with 0.09 % (W/V) sodium azide

**Preservative:** Sodium azide

**Precaution of Use:** This product contains sodium azide: a POISONOUS AND HAZARDOUS SUBSTANCE which should be handled by trained staff only.

**Handling Advice:** Avoid repeated freezing and thawing.

**Storage:** 4 °C/-20 °C

**Storage Comment:** Store the antibody undiluted at 2-8 °C for one month or (in aliquots) at -20 °C for longer.

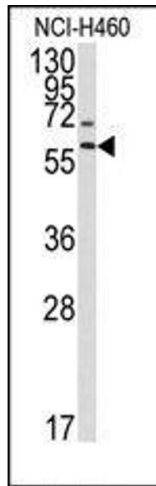


Image 1.

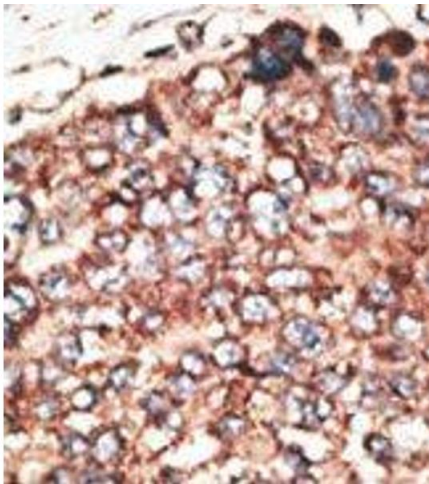


Image 2.