



[Go to Product page](#)

Datasheet for ABIN358694

## anti-MMP24 antibody (Middle Region)

### 2 Images

#### Overview

Quantity:	0.4 mL
Target:	MMP24
Binding Specificity:	Middle Region
Reactivity:	Human
Host:	Rabbit
Clonality:	Polyclonal
Conjugate:	This MMP24 antibody is un-conjugated
Application:	Western Blotting (WB), Immunohistochemistry (Paraffin-embedded Sections) (IHC (p)), Enzyme Immunoassay (EIA)

#### Product Details

Immunogen:	This antibody is generated from rabbits immunized with a KLH conjugated synthetic peptide selected from the center region of human MMP24.
Isotype:	Ig Fraction
Specificity:	This antibody reacts top MMP24.
Purification:	Protein G column, eluted with high and low pH buffers and neutralized immediately, followed by dialysis against PBS

#### Target Details

Target:	MMP24
Alternative Name:	MMP-24 ( <a href="#">MMP24 Products</a> )

## Target Details

---

**Background:** Proteins of the matrix metalloproteinase (MMP) family are involved in the breakdown of extracellular matrix in normal physiological processes, such as embryonic development, reproduction, and tissue remodeling, as well as in disease processes, such as arthritis and metastasis. Most MMPs are secreted as inactive proproteins which are activated when cleaved by extracellular proteinases. However, MMP24 is a member of the membrane-type MMP (MT-MMP) subfamily, each member of this subfamily contains a potential transmembrane domain suggesting that these proteins are expressed at the cell surface rather than secreted. This protein activates MMP2 by cleavage. The gene has previously been referred to as MMP25 but has been renamed matrix metalloproteinase 24 (MMP24). Synonyms: MMP24, MT-MMP 5, MT5-MMP, MT5MMP, Matrix metalloproteinase-24, Membrane-type matrix metalloproteinase 5

**Gene ID:** 10893, 5874

**UniProt:** [Q9Y5R2](#)

## Application Details

---

**Application Notes:** ELISA: 1/1,000. Immunohistochemistry: 1/50 - 1/100. Western Blot.  
Other applications not tested.  
Optimal dilutions are dependent on conditions and should be determined by the user.

**Restrictions:** For Research Use only

## Handling

---

**Format:** Liquid

**Concentration:** 0.25 mg/mL

**Buffer:** PBS with 0.09 % (W/V) sodium azide

**Preservative:** Sodium azide

**Precaution of Use:** This product contains sodium azide: a POISONOUS AND HAZARDOUS SUBSTANCE which should be handled by trained staff only.

**Handling Advice:** Avoid repeated freezing and thawing.

**Storage:** 4 °C/-20 °C

**Storage Comment:** Store the antibody undiluted at 2-8 °C for one month or (in aliquots) at -20 °C for longer.

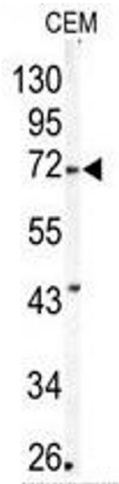


Image 1.

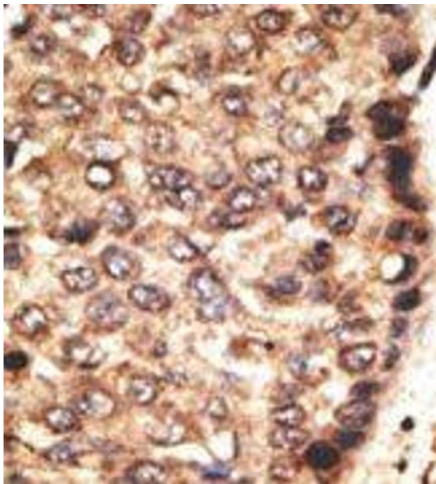


Image 2.