

Datasheet for ABIN358752
anti-Sclerostin antibody (Middle Region)

2 Images

[Go to Product page](#)

Overview

Quantity:	0.4 mL
Target:	Sclerostin (SOST)
Binding Specificity:	AA 141-171, Middle Region
Reactivity:	Human
Host:	Rabbit
Clonality:	Polyclonal
Conjugate:	This Sclerostin antibody is un-conjugated
Application:	Western Blotting (WB), Immunohistochemistry (Paraffin-embedded Sections) (IHC (p)), Enzyme Immunoassay (EIA)

Product Details

Immunogen:	KLH conjugated synthetic peptide between 141~171 amino acids from the Center region of Human SOST.
Isotype:	Ig Fraction
Specificity:	This antibody recognizes SOST (Center).
Purification:	Protein A Chromatography, eluted with high and low pH buffers and neutralized immediately, followed by dialysis against PBS

Target Details

Target:	Sclerostin (SOST)
Alternative Name:	Sclerostin / SOST (SOST Products)

Target Details

Background: Sclerostin is a secreted glycoprotein with a C-terminal cysteine knot-like (CTCK) domain and sequence similarity to the DAN (differential screening-selected gene aberrative in neuroblastoma) family of bone morphogenetic protein (BMP) antagonists. Loss-of-function mutations in this gene are associated with an autosomal-recessive disorder, sclerosteosis, which causes progressive bone overgrowth. A deletion downstream of the sclerostin gene, which causes reduced sclerostin expression, is associated with a milder form of the disorder called van Buchem disease.

Gene ID: 50964, 9606

UniProt: [Q9BQB4](#)

Application Details

Application Notes: ELISA: 1/1,000. Western Blot: 1/50-1/100 Immunohistochemistry: 1/10-1/50.
Other applications not tested.
Optimal dilutions are dependent on conditions and should be determined by the user.

Restrictions: For Research Use only

Handling

Format: Liquid

Concentration: 0.25 mg/mL

Buffer: PBS with 0.09 % (W/V) Sodium Azide

Preservative: Sodium azide

Precaution of Use: This product contains sodium azide: a POISONOUS AND HAZARDOUS SUBSTANCE which should be handled by trained staff only.

Handling Advice: Avoid repeated freezing and thawing.

Storage: 4 °C/-20 °C

Storage Comment: Store the antibody undiluted at 2-8 °C for one month or (in aliquots) at -20 °C for longer.

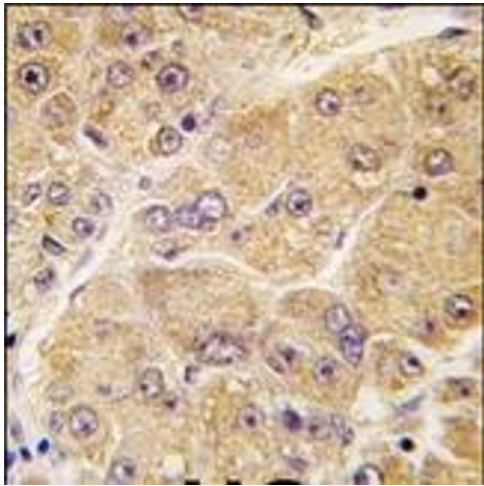


Image 1.

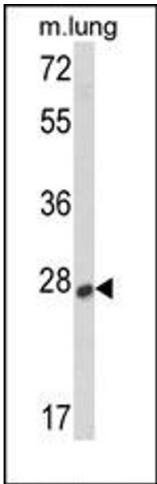


Image 2.