

Datasheet for ABIN358900
anti-CLCN4 antibody (C-Term)[Go to Product page](#)

2 Images

Overview

Quantity:	0.4 mL
Target:	CLCN4
Binding Specificity:	C-Term
Reactivity:	Human
Host:	Rabbit
Clonality:	Polyclonal
Conjugate:	This CLCN4 antibody is un-conjugated
Application:	Western Blotting (WB), Immunofluorescence (IF), Enzyme Immunoassay (EIA)

Product Details

Immunogen:	This antibody is generated from rabbits immunized with a KLH conjugated synthetic peptide selected from the C-terminal region of human CLC4.
Isotype:	Ig Fraction
Specificity:	This antibody reacts to CLC4.
Purification:	Protein G column, eluted with high and low pH buffers and neutralized immediately, followed by dialysis against PBS

Target Details

Target:	CLCN4
Alternative Name:	CLCN4 (CLCN4 Products)

Target Details

Background: The CLCN family of voltage-dependent chloride channel genes comprises nine members (CLCN1-7, Ka and Kb) which demonstrate quite diverse functional characteristics while sharing significant sequence homology. Chloride channel 4 has an evolutionary conserved CpG island and is conserved in both mouse and hamster. This gene is mapped in close proximity to APXL (Apical protein *Xenopus laevis*-like) and OA1 (Ocular albinism type I), which are both located on the human X chromosome at band p22.3. The physiological role of chloride channel 4 remains unknown but may contribute to the pathogenesis of neuronal disorders. Synonyms: CLC4, Chloride channel protein 4, Chloride transporter CLC-4, CLC-4, CLC4, H(+)/Cl(-) exchange transporter 4

Gene ID: 1183, 9606

UniProt: [P51793](#)

Application Details

Application Notes: ELISA: 1/1,000. Western Blot: 1/100 - 1/500. Immunofluorescence.
Other applications not tested.
Optimal dilutions are dependent on conditions and should be determined by the user.

Restrictions: For Research Use only

Handling

Format: Liquid

Concentration: 0.25 mg/mL

Buffer: PBS with 0.09 % (W/V) sodium azide

Preservative: Sodium azide

Precaution of Use: This product contains sodium azide: a POISONOUS AND HAZARDOUS SUBSTANCE which should be handled by trained staff only.

Handling Advice: Avoid repeated freezing and thawing.

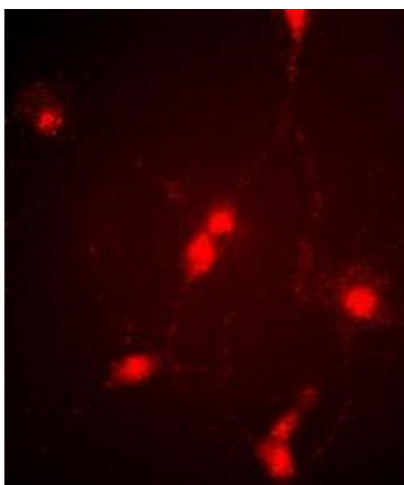
Storage: 4 °C/-20 °C

Storage Comment: Store the antibody undiluted at 2-8 °C for one month or (in aliquots) at -20 °C for longer.



Western Blotting

Image 1. Western blot of chicken brain tissue incubated with CLC4 Antibody (C-term).



Immunofluorescence

Image 2. Immunofluorescence image of cultured chick retinal amacrine (neuronal) cells labeled with CLC4 Antibody (C-term).