

Datasheet for ABIN358951
anti-IL1RL2 antibody (C-Term)[Go to Product page](#)

2 Images

1 Publication

Overview

Quantity:	0.4 mL
Target:	IL1RL2
Binding Specificity:	C-Term
Reactivity:	Human
Host:	Rabbit
Clonality:	Polyclonal
Conjugate:	This IL1RL2 antibody is un-conjugated
Application:	Western Blotting (WB), Enzyme Immunoassay (EIA)

Product Details

Immunogen:	This antibody is generated from rabbits immunized with a KLH conjugated synthetic peptide selected from the C-terminal(E487) region of human IL1R.
Isotype:	Ig Fraction
Specificity:	This antibody reacts to IL1R.
Purification:	Protein A column, eluted with high and low pH buffers and neutralized immediately, followed by dialysis against PBS

Target Details

Target:	IL1RL2
Alternative Name:	IL1RL2 / IL1RRP2 (IL1RL2 Products)

Target Details

Background: IL1R is a member of the interleukin 1 receptor family. An experiment with transient gene expression demonstrated that this receptor was incapable of binding to interleukin 1 alpha and interleukin 1 beta with high affinity. IL1R is a receptor for interleukin 1 family member 9 (IL1F9). Binding to the agonist leads to the activation of NF-kappa-B. The gene for this protein and four other interleukin 1 receptor family genes, including interleukin 1 receptor, type I (IL1R1), interleukin 1 receptor, type II (IL1R2), interleukin 1 receptor-like 1 (IL1RL1), and interleukin 18 receptor 1 (IL18R1), form a cytokine receptor gene cluster in a region mapped to chromosome 2q12. Synonyms: IL-1Rrp2, Interleukin-1 receptor-like 2, Interleukin-1 receptor-related protein 2

Gene ID: 8808, 9606

UniProt: [Q9HB29](#)

Application Details

Application Notes: ELISA: 1/1,000 . Western blotting: 1/50 - 1/100. Immunohistochemistry: 1/10 - 1/50.
Other applications not tested.
Optimal dilutions are dependent on conditions and should be determined by the user.

Restrictions: For Research Use only

Handling

Format: Liquid

Concentration: 0.25 mg/mL

Buffer: PBS with 0.09 % (W/V) sodium azide

Preservative: Sodium azide

Precaution of Use: This product contains sodium azide: a POISONOUS AND HAZARDOUS SUBSTANCE which should be handled by trained staff only.

Handling Advice: Avoid repeated freezing and thawing.

Storage: 4 °C/-20 °C

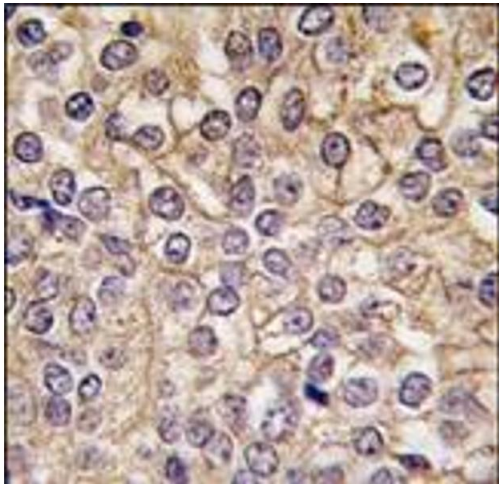
Storage Comment: Store the antibody undiluted at 2-8 °C for one month or (in aliquots) at -20 °C for longer.

Publications

Product cited in: De Marco, Lappano, De Francesco, Cirillo, Pupo, Avino, Vivacqua, Abonante, Picard, Maggiolini: " GPER signalling in both cancer-associated fibroblasts and breast cancer cells mediates a

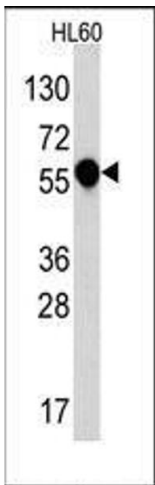
feedforward IL1 β /IL1R1 response." in: **Scientific reports**, Vol. 6, pp. 24354, (2017) ([PubMed](#)).

Images



Immunohistochemistry (Paraffin-embedded Sections)

Image 1. Formalin-fixed and paraffin-embedded human prostata carcinoma tissue reacted with IL1R antibody (C-term), which was peroxidase-conjugated to the secondary antibody, followed by DAB staining.



Western Blotting

Image 2. Western blot analysis of anti-IL1R in HL60 cell line lysates (35ug/lane). IL1R (arrow) was detected using the purified Pab (1:60 dilution).