

Datasheet for ABIN358978

**anti-Glypican 6 antibody (N-Term)**[Go to Product page](#)**1** Image

## Overview

Quantity:	0.4 mL
Target:	Glypican 6 (GPC6)
Binding Specificity:	N-Term
Reactivity:	Human
Host:	Rabbit
Clonality:	Polyclonal
Conjugate:	This Glypican 6 antibody is un-conjugated
Application:	Western Blotting (WB), Enzyme Immunoassay (EIA)

## Product Details

Immunogen:	This antibody is generated from rabbits immunized with a KLH conjugated synthetic peptide selected from the N-terminal region of human GPC6.
Isotype:	Ig Fraction
Specificity:	This antibody reacts to Glypican 6 (GPC6).
Purification:	Prepared by Saturated Ammonium Sulfate (SAS) precipitation followed by dialysis against PBS

## Target Details

Target:	Glypican 6 (GPC6)
Alternative Name:	Glypican-6 / GPC6 ( <a href="#">GPC6 Products</a> )
Background:	The glypicans comprise a family of glycosylphosphatidylinositol-anchored heparan sulfate

## Target Details

proteoglycans. The glypicans have been implicated in the control of cell growth and division. Glypican 6 is a putative cell surface coreceptor for growth factors, extracellular matrix proteins, proteases and anti-proteases.

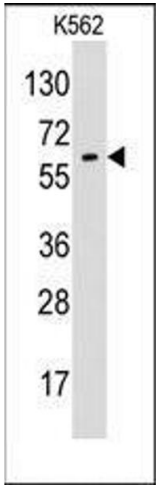
Gene ID:	10082, 9606
UniProt:	<a href="#">Q9Y625</a>
Pathways:	<a href="#">Glycosaminoglycan Metabolic Process</a>

## Application Details

Application Notes:	ELISA: 1/1,000. Western blotting: 1/50 - 1/100. Other applications not tested. Optimal dilutions are dependent on conditions and should be determined by the user.
Restrictions:	For Research Use only

## Handling

Format:	Liquid
Concentration:	0.25 mg/mL
Buffer:	PBS with 0.09 % (W/V) sodium azide
Preservative:	Sodium azide
Precaution of Use:	This product contains sodium azide: a POISONOUS AND HAZARDOUS SUBSTANCE which should be handled by trained staff only.
Handling Advice:	Avoid repeated freezing and thawing.
Storage:	4 °C/-20 °C
Storage Comment:	Store the antibody undiluted at 2-8 °C for one month or (in aliquots) at -20 °C for longer.



**Western Blotting**

**Image 1.** Western blot analysis of anti-GPC6 Pab in K562 cell line lysates (35ug/lane). GPC6(arrow) was detected using the purified Pab (1:60 dilution).