

Datasheet for ABIN359006  
**anti-GPR37 antibody (C-Term)**[Go to Product page](#)

## 2 Images

## Overview

Quantity:	0.4 mL
Target:	GPR37
Binding Specificity:	C-Term
Reactivity:	Human
Host:	Rabbit
Clonality:	Polyclonal
Conjugate:	This GPR37 antibody is un-conjugated
Application:	Western Blotting (WB), Immunohistochemistry (Paraffin-embedded Sections) (IHC (p)), Enzyme Immunoassay (EIA)

## Product Details

Immunogen:	This antibody is generated from rabbits immunized with a KLH conjugated synthetic peptide in the C-terminal region of human Pael-R (GPR37).
Isotype:	Ig Fraction
Specificity:	This antibody reacts to Pael-R (GPR37).
Purification:	Prepared by Saturated Ammonium Sulfate (SAS) precipitation followed by dialysis against PBS

## Target Details

Target:	GPR37
Abstract:	<a href="#">GPR37 Products</a>

## Target Details

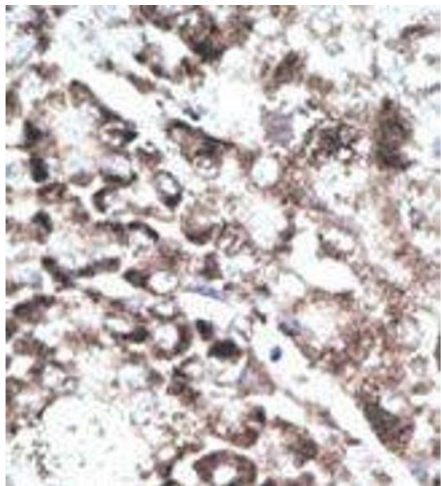
Background:	Parkinson is the second most common neurodegenerative disease after Alzheimers. About 1 percent of people over the age of 65 and 3 percent of people over the age of 75 are affected by the disease. The mutation is the most common cause of Parkinson disease identified to date. The function of Park2 is not well-known, however, it may play a role in the ubiquitin-mediated proteolytic pathway. Mutations in this gene are known to cause autosomal recessive juvenile parkinsonism. Alternative splicing of this gene produces three known products of undetermined function. Panneuronal expression of Parkin substrate Pael-R causes age-dependent selective degeneration of Drosophila dopaminergic (DA) neurons, coexpression of Parkin degrades Pael-R and suppresses its toxicity.Synonyms: ETBR-LP-1, Endothelin B receptor-like protein 1, G-protein coupled receptor 37, PAELR, Parkin-associated endothelin receptor-like receptor
Gene ID:	2861, 9606
UniProt:	<a href="#">O15354</a>

## Application Details

Application Notes:	ELISA: 1/1,000. Western blotting: 1/100 - 1/500. Immunohistochemistry: 1/50 - 1/100. Other applications not tested. Optimal dilutions are dependent on conditions and should be determined by the user.
Restrictions:	For Research Use only

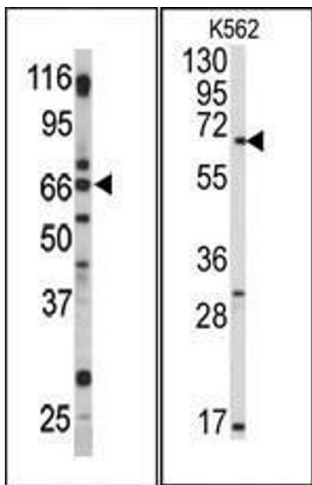
## Handling

Format:	Liquid
Concentration:	0.25 mg/mL
Buffer:	PBS with 0.09 % (W/V) sodium azide
Preservative:	Sodium azide
Precaution of Use:	This product contains sodium azide: a POISONOUS AND HAZARDOUS SUBSTANCE which should be handled by trained staff only.
Handling Advice:	Avoid repeated freezing and thawing.
Storage:	4 °C/-20 °C
Storage Comment:	Store the antibody undiluted at 2-8 °C for one month or (in aliquots) at -20 °C for longer.



Immunohistochemistry (Paraffin-embedded Sections)

**Image 1.** Formalin-fixed and paraffin-embedded human cancer tissue reacted with the primary antibody, which was peroxidase-conjugated to the secondary antibody, followed by DAB staining.



Western Blotting

**Image 2.** (LEFT)Western blot analysis of anti-Pael-R (GPR37) Pab in mouse brain tissue lysate. Pael-R (GPR37) (arrow) was detected using the purified Pab. (RIGHT)Western blot analysis of anti-Pael-R (GPR37) Antibody (C-term) in K562 cell line lysates (35ug/lane). Pael-R (arrow) was detected using the purified Pab.