

Datasheet for ABIN359013
anti-Parkin antibody (N-Term)[Go to Product page](#)

1 Image

Overview

Quantity:	0.4 mL
Target:	Parkin (PARK)
Binding Specificity:	N-Term
Reactivity:	Drosophila melanogaster
Host:	Rabbit
Clonality:	Polyclonal
Conjugate:	This Parkin antibody is un-conjugated
Application:	Western Blotting (WB), Enzyme Immunoassay (EIA)

Product Details

Immunogen:	This antibody is generated from rabbits immunized with a KLH conjugated synthetic peptide selected from the N-terminal region of Drosophila Parkin.
Isotype:	Ig Fraction
Specificity:	This antibody reacts to Parkin.
Purification:	Prepared by Saturated Ammonium Sulfate (SAS) precipitation followed by dialysis against PBS

Target Details

Target:	Parkin (PARK)
Alternative Name:	PARKIN / Park (PARK Products)
Background:	Parkin is thought to play a role in the ubiquitin/proteasome pathway for protein degradation.

Target Details

The amino terminus bears sequence homology to ubiquitin while functionally it acts as a RING-type ubiquitin protein ligase (E3) that coordinates the transfer of ubiquitin to substrate proteins, thus targeting them for degradation by the proteasome. Mutations in the human version of the protein are known to cause autosomal recessive juvenile parkinsonism.

Gene ID: 40336, 7227

UniProt: [Q7KTX7](#)

Application Details

Application Notes: ELISA: 1/1,000. Western blotting: 1/100 - 1/500.
Other applications not tested.
Optimal dilutions are dependent on conditions and should be determined by the user.

Restrictions: For Research Use only

Handling

Format: Liquid

Concentration: 0.25 mg/mL

Buffer: PBS with 0.09 % (W/V) sodium azide

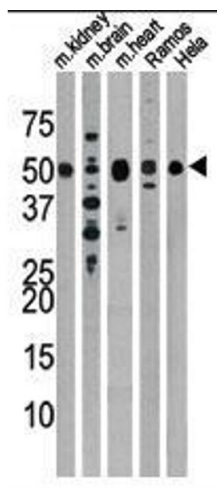
Preservative: Sodium azide

Precaution of Use: WARNING: Reagents contain sodium azide. Sodium azide is very toxic if ingested or inhaled. Avoid contact with skin, eyes, or clothing. Wear eye or face protection when handling. If skin or eye contact occurs, wash with copious amounts of water. If ingested or inhaled, contact a physician immediately. Sodium azide yields toxic hydrazoic acid under acidic conditions. Dilute azide-containing compounds in running water before discarding to avoid accumulation of potentially explosive deposits in lead or copper plumbing.

Handling Advice: Avoid repeated freezing and thawing.

Storage: 4 °C/-20 °C

Storage Comment: Store the antibody undiluted at 2-8 °C for one month or (in aliquots) at -28 °C for longer.



Western Blotting

Image 1. The anti-Drosophila Parkin Pab is used in Western blot to detect Drosophila Parkin in, from left to right, mouse kidney, mouse brain, mouse heart, Ramos, and Hela tissue lysates.