

Datasheet for ABIN359065
anti-PKC eta antibody (N-Term)

2 Images

[Go to Product page](#)

Overview

Quantity:	0.4 mL
Target:	PKC eta (PRKCH)
Binding Specificity:	N-Term
Reactivity:	Human
Host:	Rabbit
Clonality:	Polyclonal
Conjugate:	This PKC eta antibody is un-conjugated
Application:	Western Blotting (WB), Immunohistochemistry (Paraffin-embedded Sections) (IHC (p)), Enzyme Immunoassay (EIA)

Product Details

Immunogen:	This antibody is generated from rabbits immunized with a KLH conjugated synthetic peptide selected from the N-terminal region of human PKC.
Isotype:	Ig Fraction
Specificity:	This antibody reacts to PKC eta.
Purification:	Protein G column, eluted with high and low pH buffers and neutralized immediately, followed by dialysis against PBS

Target Details

Target:	PKC eta (PRKCH)
Alternative Name:	PRKCH (PRKCH Products)

Target Details

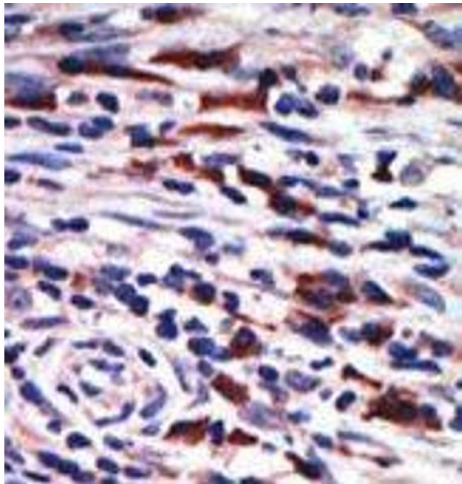
Background:	Protein kinase C (PKC) is a family of serine- and threonine-specific protein kinases that can be activated by calcium and the second messenger diacylglycerol. PKC family members phosphorylate a wide variety of protein targets and are known to be involved in diverse cellular signaling pathways. PKC family members also serve as major receptors for phorbol esters, a class of tumor promoters. Each member of the PKC family has a specific expression profile and is believed to play a distinct role in cells. PKC eta is one of the PKC family members. This protein is most abundant in lung, less in heart and skin. Synonyms: PKC eta, PKC-L, PKC-eta, PKCL, PRKCL, Protein kinase C eta type
Gene ID:	5583, 9606
UniProt:	P24723
Pathways:	Myometrial Relaxation and Contraction , Thromboxane A2 Receptor Signaling

Application Details

Application Notes:	ELISA: 1/1,000. Western blotting: 1/100 - 1/500. Immunohistochemistry: 1/50 - 1/100. Other applications not tested. Optimal dilutions are dependent on conditions and should be determined by the user.
Restrictions:	For Research Use only

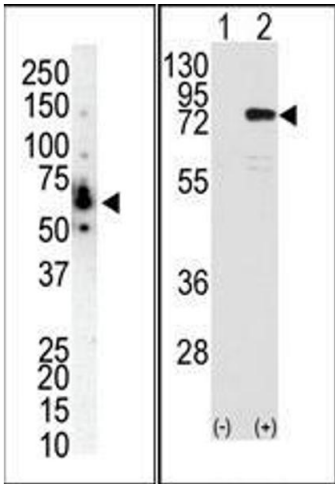
Handling

Format:	Liquid
Concentration:	0.25 mg/mL
Buffer:	PBS with 0.09 % (W/V) sodium azide
Preservative:	Sodium azide
Precaution of Use:	This product contains sodium azide: a POISONOUS AND HAZARDOUS SUBSTANCE which should be handled by trained staff only.
Handling Advice:	Avoid repeated freezing and thawing.
Storage:	4 °C/-20 °C
Storage Comment:	Store the antibody undiluted at 2-8 °C for one month or (in aliquots) at -20 °C for longer.



Immunohistochemistry (Paraffin-embedded Sections)

Image 1. Formalin-fixed and paraffin-embedded human cancer tissue reacted with the primary antibody, which was peroxidase-conjugated to the secondary antibody, followed by AEC staining.



Western Blotting

Image 2. (LEFT) Western blot analysis of anti-PKC eta N-term Pab in NCI-H460 cell lysate. PKC eta (arrow) was detected using purified Pab. Secondary HRP-anti-rabbit was used for signal visualization with chemiluminescence. (RIGHT) Western blot analysis of PRKCH (arrow) using PKC eta Antibody