

Datasheet for ABIN359137
anti-PRPS1 antibody (N-Term)[Go to Product page](#)

1 Image

Overview

Quantity:	0.4 mL
Target:	PRPS1
Binding Specificity:	N-Term
Reactivity:	Human, Mouse
Host:	Rabbit
Clonality:	Polyclonal
Conjugate:	This PRPS1 antibody is un-conjugated
Application:	Western Blotting (WB), Enzyme Immunoassay (EIA)

Product Details

Immunogen:	This antibody is generated from rabbits immunized with a KLH conjugated synthetic peptide selected from the N-terminal region of human PRPS1/2/3.
Isotype:	Ig Fraction
Specificity:	This antibody reacts to PRPS1/PRPS2/PRPS3.
Purification:	Protein G column, eluted with high and low pH buffers and neutralized immediately, followed by dialysis against PBS

Target Details

Target:	PRPS1
Alternative Name:	PRPS1 (PRPS1 Products)

Target Details

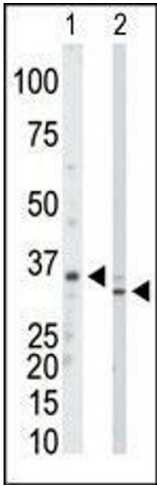
Background:	Phosphoribosylpyrophosphate synthetase (PRPS, EC 2.7.6.1) catalyzes the phosphoribosylation of ribose 5-phosphate to 5-phosphoribosyl-1-pyrophosphate, which is necessary for the de novo and salvage pathways of purine, pyrimidine, and pyridine biosynthesis. By PCR of human lymphoblast mRNA using primers based on the cDNA sequence of rat PRS I (Prps1), Roessler et al. (1990) isolated a partial human PRPS1 cDNA. They used this partial cDNA to screen lymphoblast cDNA libraries and isolated additional cDNAs corresponding to the entire PRPS1 coding region. The deduced PRPS1 protein has 318 amino acids.Synonyms: PPRibP, PRS-I, Phosphoribosyl pyrophosphate synthetase I, Ribose-phosphate pyrophosphokinase I
Gene ID:	5631, 9606
UniProt:	P60891
Pathways:	Ribonucleoside Biosynthetic Process

Application Details

Application Notes:	ELISA: 1/1,000. Western blotting: 1/100 - 1/500. Other applications not tested. Optimal dilutions are dependent on conditions and should be determined by the user.
Restrictions:	For Research Use only

Handling

Format:	Liquid
Concentration:	0.25 mg/mL
Buffer:	PBS with 0.09 % (W/V) sodium azide
Preservative:	Sodium azide
Precaution of Use:	This product contains sodium azide: a POISONOUS AND HAZARDOUS SUBSTANCE which should be handled by trained staff only.
Handling Advice:	Avoid repeated freezing and thawing.
Storage:	4 °C/-20 °C
Storage Comment:	Store the antibody undiluted at 2-8 °C for one month or (in aliquots) at -20 °C for longer.



Western Blotting

Image 1. The anti-PRPS1/2/3 Pab is used in Western blot to detect PRPS1/2/3 in mouse kidney tissue lysate (Lane 1) and Hela cell lysate (Lane 2).