

Datasheet for ABIN359142

**anti-MAP4K2 antibody (Middle Region)****2** Images[Go to Product page](#)

## Overview

Quantity:	0.4 mL
Target:	MAP4K2
Binding Specificity:	Middle Region
Reactivity:	Human, Mouse
Host:	Rabbit
Clonality:	Polyclonal
Conjugate:	This MAP4K2 antibody is un-conjugated
Application:	Western Blotting (WB), Immunohistochemistry (Paraffin-embedded Sections) (IHC (p)), Enzyme Immunoassay (EIA)

## Product Details

Immunogen:	This antibody is generated from rabbits immunized with a KLH conjugated synthetic peptide selected from the center region of human MAP4K2.
Isotype:	Ig Fraction
Specificity:	This antibody reacts to Germinal Center Kinase (GCK/MAP4K2).
Purification:	Protein G column, eluted with high and low pH buffers and neutralized immediately, followed by dialysis against PBS

## Target Details

Target:	MAP4K2
Alternative Name:	MAP4K2 ( <a href="#">MAP4K2 Products</a> )

## Target Details

Background:	<p>The protein encoded by this gene is a member of the serine/threonine protein kinase family. Although this kinase is found in many tissues, its expression in lymphoid follicles is restricted to the cells of germinal centre, where it may participate in B-cell differentiation. This kinase can be activated by TNF-alpha, and has been shown to specifically activate MAP kinases. This kinase is also found to interact with TNF receptor-associated factor 2 (TRAF2), which is involved in the activation of MAP3K1/MEKK1. Synonyms: B lymphocyte serine/threonine-protein kinase, Germinal center kinase, MAPK, MEK kinase kinase 2, MEKKK 2, Mitogen-activated protein kinase kinase kinase kinase 2, RAB8IP, Rab8-interacting protein</p>
-------------	---

Gene ID:	5871, 5874
----------	------------

UniProt:	<a href="#">Q12851</a>
----------	------------------------

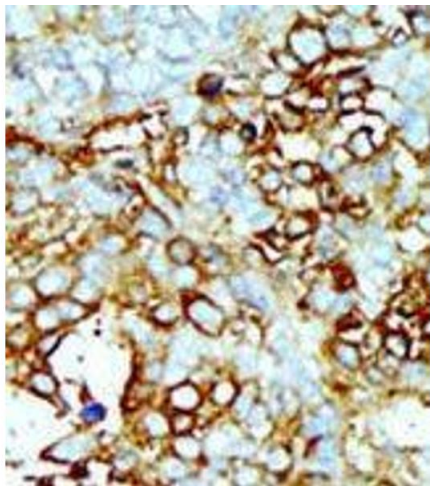
## Application Details

Application Notes:	<p>ELISA: 1/1,000. Western blotting: 1/100 - 1/500. Immunohistochemistry: 1/50 - 1/100.</p> <p>Other applications not tested.</p> <p>Optimal dilutions are dependent on conditions and should be determined by the user.</p>
--------------------	--

Restrictions:	For Research Use only
---------------	-----------------------

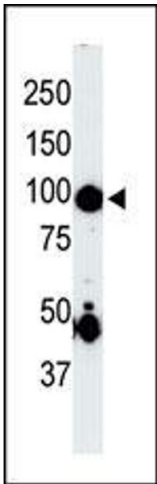
## Handling

Format:	Liquid
Concentration:	0.25 mg/mL
Buffer:	PBS with 0.09 % (W/V) sodium azide
Preservative:	Sodium azide
Precaution of Use:	This product contains sodium azide: a POISONOUS AND HAZARDOUS SUBSTANCE which should be handled by trained staff only.
Handling Advice:	Avoid repeated freezing and thawing.
Storage:	4 °C/-20 °C
Storage Comment:	Store the antibody undiluted at 2-8 °C for one month or (in aliquots) at -20 °C for longer.



**Immunohistochemistry (Paraffin-embedded Sections)**

**Image 1.** Formalin-fixed and paraffin-embedded human cancer tissue reacted with the primary antibody, which was peroxidase-conjugated to the secondary antibody, followed by AEC staining.



**Western Blotting**

**Image 2.** The anti-MAP4K2 Pab is used in Western blot to detect MAP4K2 in mouse skeletal muscle tissue lysate.