

Datasheet for ABIN359228

anti-ACVR2A antibody (N-Term)**2** Images[Go to Product page](#)

Overview

Quantity:	0.4 mL
Target:	ACVR2A
Binding Specificity:	N-Term
Reactivity:	Human
Host:	Rabbit
Clonality:	Polyclonal
Conjugate:	This ACVR2A antibody is un-conjugated
Application:	Western Blotting (WB), Immunohistochemistry (Paraffin-embedded Sections) (IHC (p)), Enzyme Immunoassay (EIA)

Product Details

Immunogen:	This antibody is generated from rabbits immunized with a KLH conjugated synthetic peptide selected from the N-terminal region of human ACVR2A.
Isotype:	Ig Fraction
Specificity:	This antibody recognizes ACVR2A.
Cross-Reactivity (Details):	Species reactivity (tested):Human.
Purification:	Prepared by Saturated Ammonium Sulfate (SAS) precipitation followed by dialysis against PBS

Target Details

Target:	ACVR2A
---------	--------

Target Details

Alternative Name:	Activin Receptor Type 2A (ACVR2A) (ACVR2A Products)
Background:	ACVR2A is an activin A type II receptor. Activins are dimeric growth and differentiation factors which belong to the transforming growth factor-beta (TGF-beta) superfamily of structurally related signaling proteins. Activins signal through a heteromeric complex of receptor serine kinases which include at least two type I (I and IB) and two type II (II and IIB) receptors. These receptors are all transmembrane proteins, composed of a ligand-binding extracellular domain with cysteine-rich region, a transmembrane domain, and a cytoplasmic domain with predicted serine/threonine specificity. Type I receptors are essential for signaling, and type II receptors are required for binding ligands and for expression of type I receptors. Type I and II receptors form a stable complex after ligand binding, resulting in phosphorylation of type I receptors by type II receptors. Type II receptors are considered to be constitutively active kinases.Synonyms: ACTR-IIA, ACTRIIA, Activin A receptor type IIA
Molecular Weight:	57639 Da
Gene ID:	92, 9606
UniProt:	P27037

Application Details

Application Notes:	ELISA: 1/1,000. Western blotting: 1/100-1/500. Immunohistochemistry: 1/50-1/100. Other applications not tested. Optimal dilutions are dependent on conditions and should be determined by the user.
Restrictions:	For Research Use only

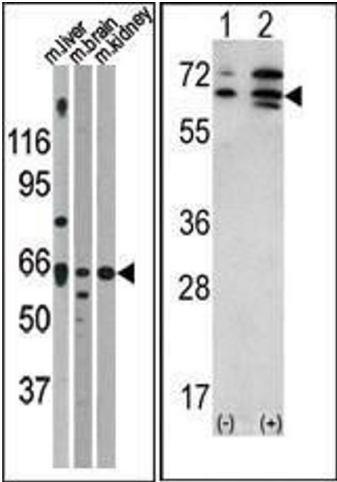
Handling

Format:	Liquid
Concentration:	0.25 mg/mL
Buffer:	PBS with 0.09 % (W/V) Sodium Azide as preservative.
Preservative:	Sodium azide
Precaution of Use:	This product contains sodium azide: a POISONOUS AND HAZARDOUS SUBSTANCE which should be handled by trained staff only.
Handling Advice:	Avoid repeated freezing and thawing.
Storage:	4 °C/-20 °C

Handling

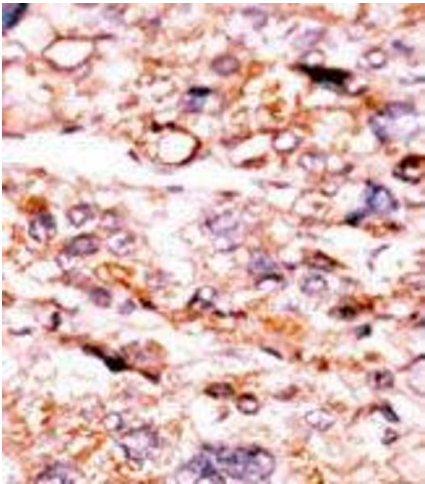
Storage Comment: Store the antibody undiluted at 2-8 °C for one month or (in aliquots) at-20 °C for longer.

Images



Western Blotting

Image 1. (LEFT)Western blot analysis of anti-ACVR2A Antibody (N-term) in mouse liver brain and kidney tissue lysates (35ug/lane). ACVR2A (arrow) was detected using the purified Pab. (RIGHT)Western blot analysis of ACVR2A (arrow) using rabbit polyclonal ACVR2A Antibody



Immunohistochemistry (Paraffin-embedded Sections)

Image 2. Formalin-fixed and paraffin-embedded human cancer tissue reacted with the primary antibody, which was peroxidase-conjugated to the secondary antibody, followed by AEC staining.