

Datasheet for ABIN359259
anti-CDKL2 antibody (AA 233-263)[Go to Product page](#)

2 Images

Overview

Quantity:	0.4 mL
Target:	CDKL2
Binding Specificity:	AA 233-263
Reactivity:	Human
Host:	Rabbit
Clonality:	Polyclonal
Conjugate:	This CDKL2 antibody is un-conjugated
Application:	Western Blotting (WB), Enzyme Immunoassay (EIA)

Product Details

Immunogen:	KLH conjugated synthetic peptide between 233~263 amino acids from the center region of Human CDKL2 . Genename: CDKL2
Isotype:	Ig Fraction
Specificity:	This antibody detects CDKL2 at Center.
Purification:	Prepared by Saturated Ammonium Sulfate (SAS) precipitation followed by dialysis against PBS

Target Details

Target:	CDKL2
Alternative Name:	CDKL2 (CDKL2 Products)
Background:	CDKL2 belongs to the CDKL subfamily. CDKL2 has been suggested to be important in learning

Target Details

and memory. Multiple variants of CDKL2 are generated by alternative splicing and intraexonal termination, resulting in diverse carboxy-terminal regulatory domains. Two alternative promoters linked to distinct noncoding exons direct the expression of KKIAMRE. Synonyms: Cyclin-dependent kinase-like 2, KKIAMRE, Protein kinase p56 KKIAMRE, Serine/threonine-protein kinase KKIAMRE

Gene ID: 8999, 9606

UniProt: [Q92772](#)

Application Details

Application Notes: ELISA: 1/1,000. Western blotting: 1/100 - 1/500.
Other applications not tested.
Optimal dilutions are dependent on conditions and should be determined by the user.

Restrictions: For Research Use only

Handling

Format: Liquid

Concentration: 0.25 mg/mL

Buffer: PBS, 0.09 % (W/V) Sodium Azide

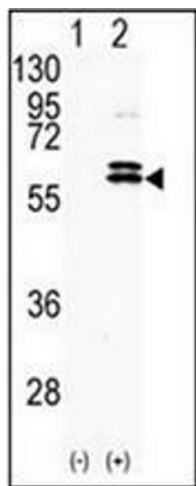
Preservative: Sodium azide

Precaution of Use: This product contains sodium azide: a POISONOUS AND HAZARDOUS SUBSTANCE which should be handled by trained staff only.

Handling Advice: Avoid repeated freezing and thawing.

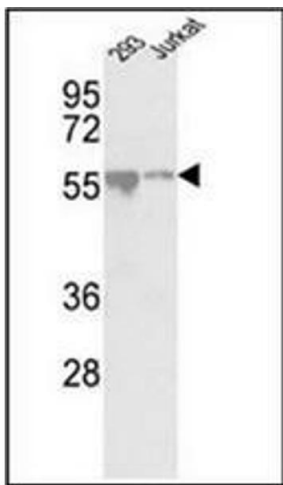
Storage: 4 °C/-20 °C

Storage Comment: Store the antibody undiluted at 2-8 °C for one month or (in aliquots) at -20 °C for longer.



Western Blotting

Image 1. Western blot analysis of CDKL2 (arrow) using CDKL2 antibody (Center) Cat.-No AP13743PU-N. 293 cell lysates (2 ug/lane) either nontransfected (Lane 1) or transiently transfected with the CDKL2 gene (Lane 2) (Origene Technologies).



Western Blotting

Image 2. Western blot analysis of CDKL2 antibody (Center) in 293, Jurkat cell line lysates (35ug/lane). CDKL2 (arrow) was detected using the purified Pab.