



[Go to Product page](#)

Datasheet for ABIN359271
anti-GCN2 antibody (C-Term)

2 Images

Overview

Quantity:	0.4 mL
Target:	GCN2 (EIF2AK4)
Binding Specificity:	C-Term
Reactivity:	Human
Host:	Rabbit
Clonality:	Polyclonal
Conjugate:	This GCN2 antibody is un-conjugated
Application:	Western Blotting (WB), Immunohistochemistry (Paraffin-embedded Sections) (IHC (p)), Enzyme Immunoassay (EIA)

Product Details

Immunogen:	This antibody is generated from rabbits immunized with a KLH conjugated synthetic peptide selected from the C-terminal region with glycine at position 11 of human GCN2.
Isotype:	Ig Fraction
Specificity:	This antibody reacts to GCN2.
Purification:	Protein G column, eluted with high and low pH buffers and neutralized immediately, followed by dialysis against PBS

Target Details

Target:	GCN2 (EIF2AK4)
Alternative Name:	EIF2AK4 / GCN2 (EIF2AK4 Products)

Target Details

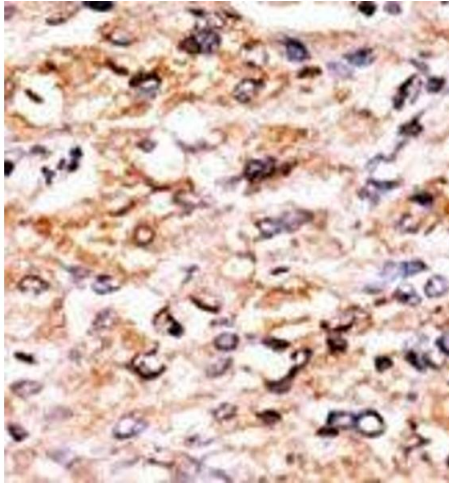
Background:	GCN2 (EIF2AK4) belongs to a family of kinases that phosphorylate the alpha subunit of eukaryotic translation initiation factor-2 to downregulate protein synthesis in response to varied cellular stresses.Synonyms: Eukaryotic translation initiation factor 2-alpha kinase 4, GCN2-like protein, KIAA1338
Gene ID:	440275, 9606
UniProt:	Q9P2K8
Pathways:	ER-Nucleus Signaling , Hepatitis C

Application Details

Application Notes:	ELISA: 1/1,000. Western Blot: 1/100 - 1/500. Immunohistochemistry: 1/50 - 1/100. Other applications not tested. Optimal dilutions are dependent on conditions and should be determined by the user.
Restrictions:	For Research Use only

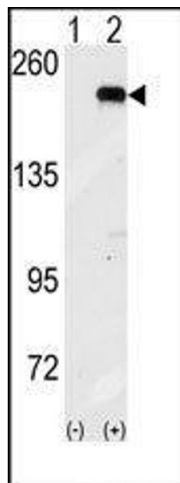
Handling

Format:	Liquid
Concentration:	0.25 mg/mL
Buffer:	PBS with 0.09 % (W/V) sodium azide
Preservative:	Sodium azide
Precaution of Use:	This product contains sodium azide: a POISONOUS AND HAZARDOUS SUBSTANCE which should be handled by trained staff only.
Handling Advice:	Avoid repeated freezing and thawing.
Storage:	4 °C/-20 °C
Storage Comment:	Store the antibody undiluted at 2-8 °C for one month or (in aliquots) at -20 °C for longer.



Immunohistochemistry (Paraffin-embedded Sections)

Image 1. Formalin-fixed and paraffin-embedded human cancer tissue reacted with the primary antibody, which was peroxidase-conjugated to the secondary antibody, followed by AEC staining.



Western Blotting

Image 2. Western blot analysis of GCN2 (arrow) using GCN2 Antibody