

Datasheet for ABIN359276
anti-GUCY1A2 antibody (N-Term)[Go to Product page](#)

2 Images

Overview

Quantity:	0.4 mL
Target:	GUCY1A2
Binding Specificity:	N-Term
Reactivity:	Human, Mouse
Host:	Rabbit
Clonality:	Polyclonal
Conjugate:	This GUCY1A2 antibody is un-conjugated
Application:	Western Blotting (WB), Immunohistochemistry (Paraffin-embedded Sections) (IHC (p)), Enzyme Immunoassay (EIA)

Product Details

Immunogen:	This antibody is generated from rabbits immunized with a KLH conjugated synthetic peptide selected from the N-terminal region of human GUCY1A2.
Isotype:	Ig Fraction
Specificity:	This antibody reacts to Guanylyl Cyclase alpha 2 (GUCY1A2).
Purification:	Prepared by Saturated Ammonium Sulfate (SAS) precipitation followed by dialysis against PBS

Target Details

Target:	GUCY1A2
Alternative Name:	GCS-alpha-2 / GUCY1A2 (GUCY1A2 Products)

Target Details

Background: Soluble guanylate cyclase (sGC), a heterodimeric protein consisting of an alpha and a beta subunit, catalyzes the conversion of GTP to the second messenger cGMP and functions as the main receptor for nitric oxide and nitrovasodilator drugs. Synonyms: GUC1A2, GUCSA2, Guanylate cyclase soluble subunit alpha-2

Gene ID: 2977, 9606

UniProt: [P33402](#)

Application Details

Application Notes: ELISA: 1/1,000. Immunohistochemistry: 1/50 - 1/100. Western Blot: 1/50 - 1/200.
Other applications not tested.
Optimal dilutions are dependent on conditions and should be determined by the user.

Restrictions: For Research Use only

Handling

Format: Liquid

Concentration: 0.25 mg/mL

Buffer: PBS with 0.09 % (W/V) Sodium Azide as preservative.

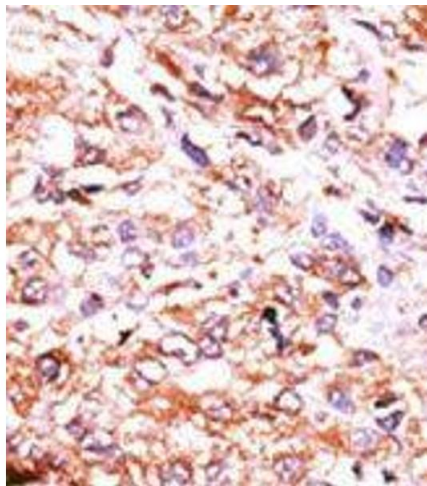
Preservative: Sodium azide

Precaution of Use: This product contains sodium azide: a POISONOUS AND HAZARDOUS SUBSTANCE which should be handled by trained staff only.

Handling Advice: Avoid repeated freezing and thawing.

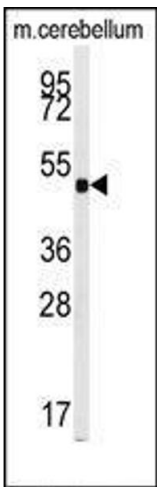
Storage: 4 °C/-20 °C

Storage Comment: Store the antibody undiluted at 2-8 °C for one month or (in aliquots) at -20 °C for longer.



Immunohistochemistry (Paraffin-embedded Sections)

Image 1. Formalin-fixed and paraffin-embedded human cancer tissue reacted with the primary antibody, which was peroxidase-conjugated to the secondary antibody, followed by AEC staining.



Western Blotting

Image 2. Western blot analysis of anti-GUCY1A2 Antibody (N-term) in mouse cerebellum tissue lysates (35ug/lane). GUCY1A2 (arrow) was detected using the purified Pab.