



[Go to Product page](#)

Datasheet for ABIN359277

anti-GUCY1A1 antibody (N-Term)

2 Images

Overview

Quantity:	0.4 mL
Target:	GUCY1A1
Binding Specificity:	N-Term
Reactivity:	Human
Host:	Rabbit
Clonality:	Polyclonal
Conjugate:	This GUCY1A1 antibody is un-conjugated
Application:	Western Blotting (WB), Immunohistochemistry (Paraffin-embedded Sections) (IHC (p)), Enzyme Immunoassay (EIA)

Product Details

Immunogen:	This antibody is generated from rabbits immunized with a KLH conjugated synthetic peptide selected from the N-terminal region of human GUCY1A3.
Isotype:	Ig Fraction
Specificity:	This antibody reacts to Guanylyl Cyclase alpha 1 (GUCY1A3).
Purification:	Prepared by Saturated Ammonium Sulfate (SAS) precipitation followed by dialysis against PBS

Target Details

Target:	GUCY1A1
Alternative Name:	Guanylate Cyclase Soluble GUCY1A3 (GUCY1A1 Products)

Target Details

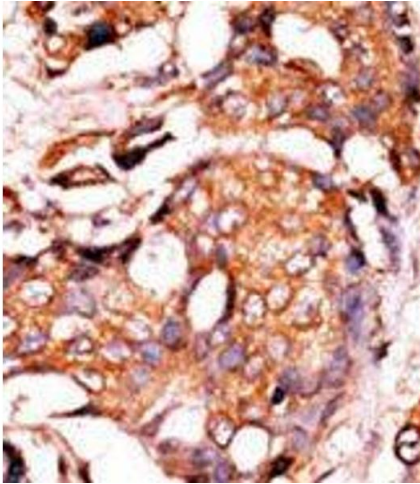
Background:	Soluble guanylate cyclase (sGC), a heterodimeric protein consisting of an alpha and a beta subunit, catalyzes the conversion of GTP to the second messenger cGMP and functions as the main receptor for nitric oxide and nitrovasodilator drugs.Synonyms: GCS-alpha-1, GCS-alpha-3, GUC1A3, GUCSA3, GUCY1A1, Guanylate cyclase soluble subunit alpha-3, Soluble guanylate cyclase large subunit, sGC alpha
Gene ID:	2982, 9606
UniProt:	Q02108
Pathways:	Myometrial Relaxation and Contraction

Application Details

Application Notes:	ELISA: 1/1,000. Western blotting: 1/100 - 1/500. Immunohistochemistry: 1/50 - 1/100. Other applications not tested. Optimal dilutions are dependent on conditions and should be determined by the user.
Restrictions:	For Research Use only

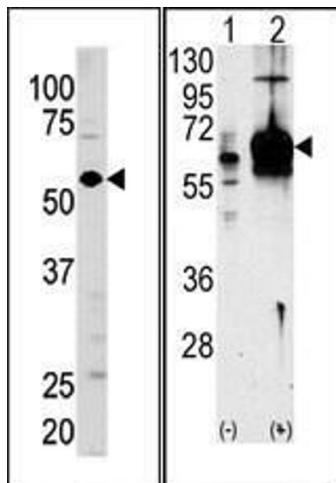
Handling

Format:	Liquid
Concentration:	0.25 mg/mL
Buffer:	PBS with 0.09 % (W/V) sodium azide
Preservative:	Sodium azide
Precaution of Use:	This product contains sodium azide: a POISONOUS AND HAZARDOUS SUBSTANCE which should be handled by trained staff only.
Handling Advice:	Avoid repeated freezing and thawing.
Storage:	4 °C/-20 °C
Storage Comment:	Store the antibody undiluted at 2-8 °C for one month or (in aliquots) at-20 °C for longer.



Immunohistochemistry (Paraffin-embedded Sections)

Image 1. Formalin-fixed and paraffin-embedded human cancer tissue reacted with the primary antibody, which was peroxidase-conjugated to the secondary antibody, followed by AEC staining.



Western Blotting

Image 2. (LEFT) Western blot analysis of anti-GUCY1A3 Pab in mouse brain tissue lysate (35ug/lane). GUCY1A3 (arrow) was detected using the purified Pab (1:40 dilution). (RIGHT) Western blot analysis of GUCY1A3 (arrow) using GUCY1A3 Antibody