

Datasheet for ABIN359301  
**anti-MARK4 antibody (C-Term)**



[Go to Product page](#)

1 Image

## Overview

Quantity:	0.4 mL
Target:	MARK4
Binding Specificity:	C-Term
Reactivity:	Human
Host:	Rabbit
Clonality:	Polyclonal
Conjugate:	This MARK4 antibody is un-conjugated
Application:	Western Blotting (WB), Enzyme Immunoassay (EIA)

## Product Details

Immunogen:	This antibody is generated from rabbits immunized with a KLH conjugated synthetic peptide selected from the C-terminal region of human MARK4.
Isotype:	Ig Fraction
Specificity:	This antibody reacts to MARK4.
Purification:	Protein G column, eluted with high and low pH buffers and neutralized immediately, followed by dialysis against PBS

## Target Details

Target:	MARK4
Alternative Name:	MARK4 ( <a href="#">MARK4 Products</a> )

## Target Details

**Background:** MARK4 contains an N-terminal serine/threonine kinase domain, a central ubiquitin-associated domain, and a C-terminal KA1-associated kinase domain. RT-PCR analysis detects upregulated expression of the gene for MARK4 in nearly all clinical hepatocellular carcinoma cells. Northern blot analysis reveals ubiquitous expression of a 3.6-kb transcript, with highest expression in testis. Immunofluorescence microscopy demonstrates homogeneous cytoplasmic expression. Colony-forming assays show that MARK4 antisense reduces the growth of SNU475 cells. It has been suggested that MARK4 provides a growth advantage to cells. Synonyms: MAP microtubule affinity-regulating kinase 4, MARKL1

**Gene ID:** 57787

**NCBI Accession:** [NP\\_001186796](#)

**UniProt:** [Q96L34](#)

## Application Details

**Application Notes:** ELISA: 1/1,000. Western blotting: 1/100 - 1/500.  
Other applications not tested.  
Optimal dilutions are dependent on conditions and should be determined by the user.

**Restrictions:** For Research Use only

## Handling

**Format:** Liquid

**Concentration:** 0.25 mg/mL

**Buffer:** PBS with 0.09 % (W/V) sodium azide

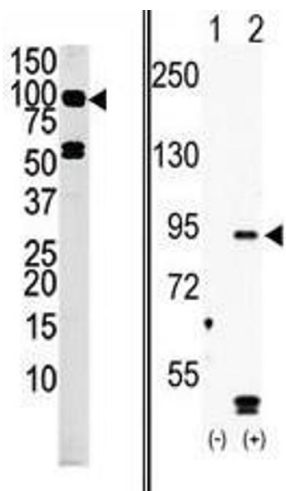
**Preservative:** Sodium azide

**Precaution of Use:** This product contains sodium azide: a POISONOUS AND HAZARDOUS SUBSTANCE which should be handled by trained staff only.

**Handling Advice:** Avoid repeated freezing and thawing.

**Storage:** 4 °C/-20 °C

**Storage Comment:** Store the antibody undiluted at 2-8 °C for one month or (in aliquots) at -20 °C for longer.



Western Blotting

**Image 1.** (LEFT)Western blot analysis of anti-MARK4 Pab in mouse liver tissue lysate (35ug/lane). MARK4(arrow) was detected using the purified Pab (1:40dilution). (RIGHT)Western blot analysis of MARK4 (arrow) using rabbit polyclonal hMARK4-R626 Antibody. 293 cell lysates (2 ug/lane) either nontransfected (Lane 1) or transiently transfected with the MARK4 gene (Lane 2)