

Datasheet for ABIN359363

anti-RIPK3 antibody (Middle Region)[Go to Product page](#)**3** Images

Overview

Quantity:	0.4 mL
Target:	RIPK3
Binding Specificity:	Middle Region
Reactivity:	Human, Mouse
Host:	Rabbit
Clonality:	Polyclonal
Conjugate:	This RIPK3 antibody is un-conjugated
Application:	Western Blotting (WB), Immunohistochemistry (Paraffin-embedded Sections) (IHC (p)), Enzyme Immunoassay (EIA)

Product Details

Immunogen:	This antibody is generated from rabbits immunized with a KLH conjugated synthetic peptide selected from the center region of human RIPK3.
Isotype:	Ig Fraction
Specificity:	This antibody detects RIPK3 / RIP3.
Purification:	Protein G column, eluted with high and low pH buffers and neutralized immediately, followed by dialysis against PBS

Target Details

Target:	RIPK3
Alternative Name:	RIPK3 / RIP3 (RIPK3 Products)

Target Details

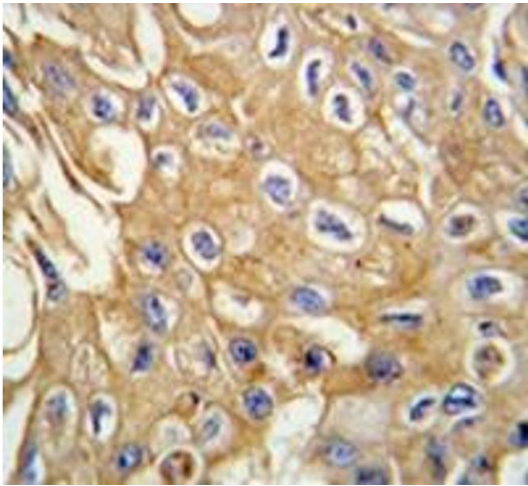
Background:	The product of the RIPK3 gene is a member of the receptor-interacting protein (RIP) family of serine/threonine protein kinases, and contains a C-terminal domain unique from other RIP family members. The encoded protein is predominantly localized to the cytoplasm, and can undergo nucleocytoplasmic shuttling dependent on novel nuclear localization and export signals. It is a component of the tumor necrosis factor (TNF) receptor-I signaling complex, and can induce apoptosis and weakly activate the NF-kappaB transcription factor.Synonyms: RIP-3, RIP-like protein kinase 3, Receptor-interacting protein 3, Receptor-interacting serine/threonine-protein kinase 3
Molecular Weight:	56901 Da.
Gene ID:	11035, 9606
UniProt:	Q9Y572
Pathways:	Activation of Innate immune Response , Toll-Like Receptors Cascades

Application Details

Application Notes:	ELISA1: 1,000. Other applications not tested. Optimal dilutions are dependent on conditions and should be determined by the user.
Restrictions:	For Research Use only

Handling

Format:	Liquid
Concentration:	0.25 mg/mL
Buffer:	PBS with 0.09 % (W/V) sodium azide
Preservative:	Sodium azide
Precaution of Use:	This product contains sodium azide: a POISONOUS AND HAZARDOUS SUBSTANCE which should be handled by trained staff only.
Handling Advice:	Avoid repeated freezing and thawing.
Storage:	4 °C/-20 °C
Storage Comment:	Store the antibody at 2 - 8 °C up to one month or (in aliquots) at -20 °C for longer.



Immunohistochemistry (Paraffin-embedded Sections)

Image 1. Immunohistochemistry analysis in human lung carcinoma tissue (Formalin-fixed, Paraffin-embedded) using RIPK3 / RIP3 Antibody , followed by peroxidase-conjugated secondary antibody and DAB staining. This data demonstrates the use of this antibody for IHC. Clinical relevance has not been evaluated.



Western Blotting

Image 2. Western blot analysis of RIPK3 (arrow) in HeLa cell line lysates (35ug/lane) using RIPK3 / RIP3

Western Blotting

Image 3. Western blot analysis of RIPK3 (arrow) in mouse cerebellum tissue lysates (35ug/lane) using RIPK3 / RIP3