

Datasheet for ABIN359369

anti-SEPHS2 antibody (Middle Region)**2** Images[Go to Product page](#)

Overview

Quantity:	0.4 mL
Target:	SEPHS2
Binding Specificity:	Middle Region
Reactivity:	Human
Host:	Rabbit
Clonality:	Polyclonal
Conjugate:	This SEPHS2 antibody is un-conjugated
Application:	Western Blotting (WB), Immunohistochemistry (Paraffin-embedded Sections) (IHC (p)), Enzyme Immunoassay (EIA)

Product Details

Immunogen:	This antibody is generated from rabbits immunized with a KLH conjugated synthetic peptide selected from the Center region of human SEPSH2.
Isotype:	Ig Fraction
Specificity:	This antibody detects SEPSH2 at center.
Purification:	Protein G column, eluted with high and low pH buffers and neutralized immediately, followed by dialysis against PBS.

Target Details

Target:	SEPHS2
Alternative Name:	SEPHS2 (SEPHS2 Products)

Target Details

Background: This protein encodes an enzyme that synthesizes selenophosphate from selenide and ATP. Selenophosphate is the selenium donor used to synthesize selenocysteine, which is co-translationally incorporated into selenoproteins at in-frame UGA codons. This protein itself contains a selenocysteine residue in its predicted active site. The 3' UTR of the gene has a stem-loop secondary structure called a selenocysteine insertion sequence (SECIS) element, which allows UGA to direct the incorporation of selenocysteine rather than signal a translational stop. Synonyms: SPS2, Selenide water dikinase 2, Selenium donor protein 2, Selenophosphate synthase 2

Molecular Weight: 47258 Da.

Gene ID: 22928, 9606

UniProt: [Q99611](#)

Application Details

Application Notes: The suggested dilution is: ELISA 1: 1,000. Western blot 1: 100 - 1: 500. Immunohistochemistry 1: 50 - 1: 100.
Other applications not tested.
Optimal dilutions are dependent on conditions and should be determined by the user.

Restrictions: For Research Use only

Handling

Format: Liquid

Concentration: 0.25 mg/mL

Buffer: PBS with 0.09 % (W/V) sodium azide

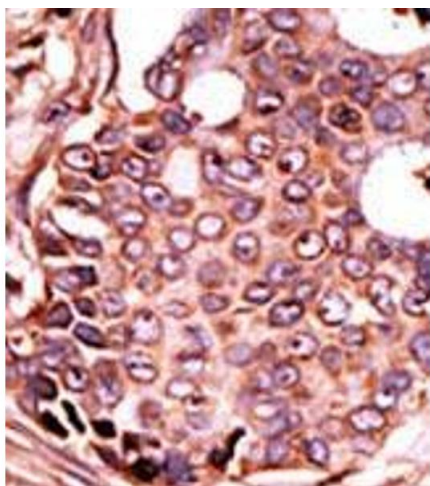
Preservative: Sodium azide

Precaution of Use: This product contains sodium azide: a POISONOUS AND HAZARDOUS SUBSTANCE which should be handled by trained staff only.

Handling Advice: Avoid repeated freezing and thawing.

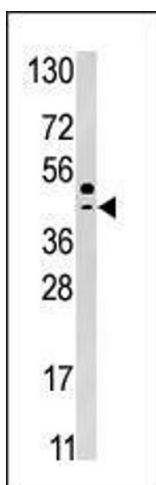
Storage: 4 °C/-20 °C

Storage Comment: Store the antibody at 2 - 8 °C up to one month or (in aliquots) at -20 °C for longer.



Immunohistochemistry (Paraffin-embedded Sections)

Image 1. Formalin-fixed and paraffin-embedded human cancer tissue (breast carcinoma) reacted with the primary antibody, which was peroxidase-conjugated to the secondary antibody, followed by DAB staining. This data demonstrates the use of this antibody for immunohistochemistry; clinical relevance has not been evaluated.



Western Blotting

Image 2. Western blot analysis of anti-SEPSH2 Pab in HepG2 cell line lysate (35 µg/lane). SEPSH2 (arrow) was detected using the purified Pab (1:50 dilution).