



[Go to Product page](#)

Datasheet for ABIN359378

## anti-UCKL1 antibody (N-Term)

### 2 Images

#### Overview

Quantity:	0.4 mL
Target:	UCKL1
Binding Specificity:	N-Term
Reactivity:	Human, Mouse
Host:	Rabbit
Clonality:	Polyclonal
Conjugate:	This UCKL1 antibody is un-conjugated
Application:	Western Blotting (WB), Immunohistochemistry (Paraffin-embedded Sections) (IHC (p)), Enzyme Immunoassay (EIA)

#### Product Details

Immunogen:	This antibody is generated from rabbits immunized with a KLH conjugated synthetic peptide selected from the N-terminal region of human URKL1.
Isotype:	Ig Fraction
Specificity:	This antibody detects URKL1 at N-term.
Purification:	Prepared by Saturated Ammonium Sulfate (SAS) precipitation followed by dialysis against PBS.

#### Target Details

Target:	UCKL1
Alternative Name:	UCKL1 ( <a href="#">UCKL1 Products</a> )

## Target Details

---

Background: Uridine kinase is a key enzyme in the pyrimidine salvage pathway of all mammalian cells. URKL1 (uridine kinase-like 1) is highly similar in structure and sequence to uridine kinase. Synonyms: F538, URKKL1, Uridine-cytidine kinase-like 1

Molecular Weight: 61141 Da.

Gene ID: 54963, 9606

UniProt: [Q9NWZ5](#)

Pathways: [Ribonucleoside Biosynthetic Process](#)

## Application Details

---

Application Notes: ELISA 1: 1,000. Western blot 1: 100 - 1: 500. Immunohistochemistry 1: 50 - 1: 100.  
Other applications not tested.  
Optimal dilutions are dependent on conditions and should be determined by the user.

Restrictions: For Research Use only

## Handling

---

Format: Liquid

Concentration: 0.25 mg/mL

Buffer: PBS with 0.09 % (W/V) sodium azide

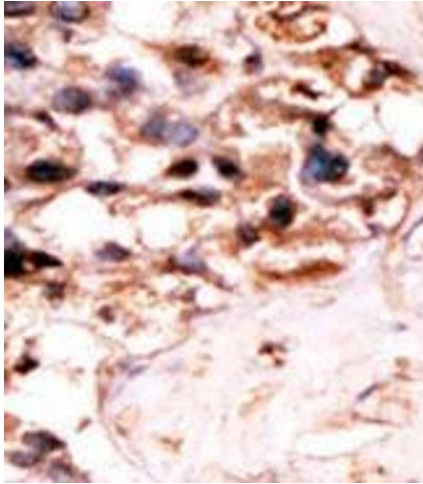
Preservative: Sodium azide

Precaution of Use: This product contains sodium azide: a POISONOUS AND HAZARDOUS SUBSTANCE which should be handled by trained staff only.

Handling Advice: Avoid repeated freezing and thawing.

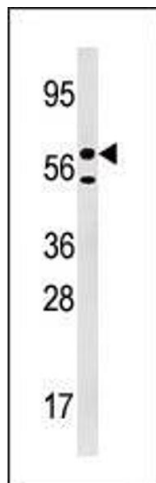
Storage: 4 °C/-20 °C

Storage Comment: Store the antibody at 2 - 8 °C up to one month or (in aliquots) at -20 °C for longer.



### Immunohistochemistry (Paraffin-embedded Sections)

**Image 1.** Formalin-fixed and paraffin-embedded human cancer tissue (hepatocarcinoma) reacted with the primary antibody, which was peroxidase-conjugated to the secondary antibody, followed by DAB staining. This data demonstrates the use of this antibody for immunohistochemistry; clinical relevance has not been evaluated.



### Western Blotting

**Image 2.** Western blot analysis of anti-URKL1 Pab in 293 cell line lysate (35 µg/lane). URKL1 (arrow) was detected using the purified Pab (1:50 dilution).