

Datasheet for ABIN359392
anti-RIOK1 antibody (C-Term)



[Go to Product page](#)

1 Image

Overview

Quantity:	0.4 mL
Target:	RIOK1
Binding Specificity:	C-Term
Reactivity:	Human
Host:	Rabbit
Clonality:	Polyclonal
Conjugate:	This RIOK1 antibody is un-conjugated
Application:	Western Blotting (WB), Enzyme Immunoassay (EIA)

Product Details

Immunogen:	This antibody is generated from rabbits immunized with a KLH conjugated synthetic peptide selected from the C-terminal region of human RIOK1.
Isotype:	Ig Fraction
Specificity:	This antibody detects RIOK1.
Purification:	Protein G column, eluted with high and low pH buffers and neutralized immediately, followed by dialysis against PBS.

Target Details

Target:	RIOK1
Alternative Name:	RIOK1 (RIOK1 Products)

Target Details

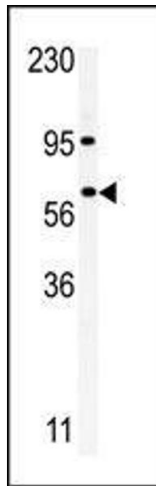
Background:	Synonyms: RIO kinase 1, Serine/threonine-protein kinase RIO1
Molecular Weight:	65583 Da.
Gene ID:	83732, 9606
UniProt:	Q9BRS2

Application Details

Application Notes:	ELISA 1: 1,000. Western blot 1: 100 - 1: 500. Other applications not tested. Optimal dilutions are dependent on conditions and should be determined by the user.
Restrictions:	For Research Use only

Handling

Format:	Liquid
Concentration:	0.25 mg/mL
Buffer:	PBS with 0.09 % (W/V) sodium azide
Preservative:	Sodium azide
Precaution of Use:	This product contains sodium azide: a POISONOUS AND HAZARDOUS SUBSTANCE which should be handled by trained staff only.
Handling Advice:	Avoid repeated freezing and thawing.
Storage:	4 °C/-20 °C
Storage Comment:	Store the antibody at 2 - 8 °C up to one month or (in aliquots) at -20 °C for longer.



Western Blotting

Image 1. Western blot analysis of anti-RIOK1 Pab in A375 cell line lysate. RIOK1 (arrow) was detected using the purified Pab.