

Datasheet for ABIN359397

**anti-CAMK1D antibody (C-Term)****3** Images[Go to Product page](#)

## Overview

Quantity:	0.4 mL
Target:	CAMK1D
Binding Specificity:	C-Term
Reactivity:	Human
Host:	Rabbit
Clonality:	Polyclonal
Conjugate:	This CAMK1D antibody is un-conjugated
Application:	Western Blotting (WB), Immunohistochemistry (Paraffin-embedded Sections) (IHC (p)), Enzyme Immunoassay (EIA)

## Product Details

Immunogen:	This antibody is generated from rabbits immunized with a KLH conjugated synthetic peptide selected from the C-terminal region of human CAMK1-like protein kinase.
Isotype:	Ig Fraction
Specificity:	This antibody detects CAMK1D at C-term.
Purification:	Protein G column, eluted with high and low pH buffers and neutralized immediately, followed by dialysis against PBS.

## Target Details

Target:	CAMK1D
Alternative Name:	CAMK1D ( <a href="#">CAMK1D Products</a> )

## Target Details

**Background:** CAMK1-like protein kinase belongs to a proposed calcium-triggered signaling cascade. This protein is expressed in polymorphonuclear leukocytes (PMNs) and may be part of the chemokine signal transduction pathway that regulates granulocyte function. CAMK1-like protein kinase may play a role in apoptosis of erythroleukemia cells. It activates MAP kinase MAPK3, and in vitro, phosphorylates transcription factor CREM isoform Beta and probably CREB1. Synonyms: CKLiK, CaM kinase I delta, CaM kinase ID, CaMKI-delta, Calcium/calmodulin-dependent protein kinase type 1D, CamKI-like protein kinase, Camk1D

**Gene ID:** 57118, 9606

**UniProt:** [Q8IU85](#)

## Application Details

**Application Notes:** ELISA 1: 1,000. Western blot 1: 100 - 1: 500. Immunohistochemistry 1: 50 - 1: 100.  
Other applications not tested.  
Optimal dilutions are dependent on conditions and should be determined by the user.

**Restrictions:** For Research Use only

## Handling

**Format:** Liquid

**Concentration:** 0.25 mg/mL

**Buffer:** PBS with 0.09 % (W/V) sodium azide

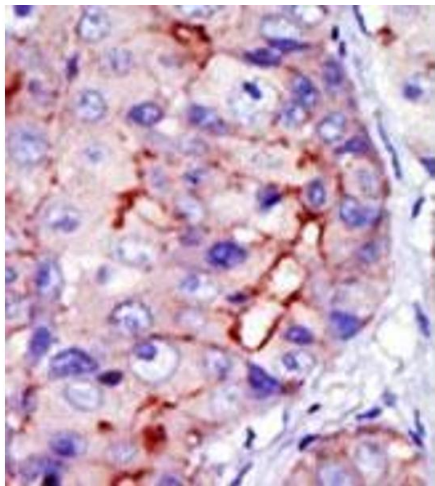
**Preservative:** Sodium azide

**Precaution of Use:** This product contains sodium azide: a POISONOUS AND HAZARDOUS SUBSTANCE which should be handled by trained staff only.

**Handling Advice:** Avoid repeated freezing and thawing. Should this product contain a precipitate we recommend microcentrifugation before use.

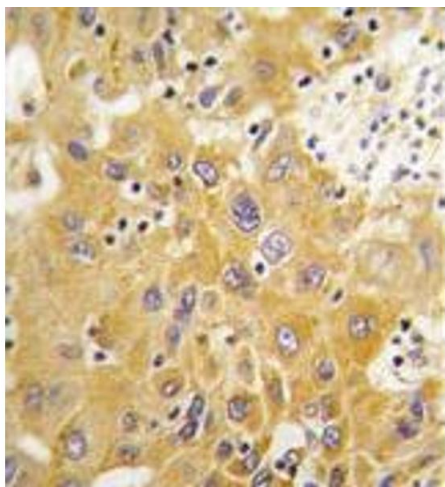
**Storage:** 4 °C/-20 °C

**Storage Comment:** Store the antibody at 2 - 8 °C up to one month or (in aliquots) at -20 °C for longer.



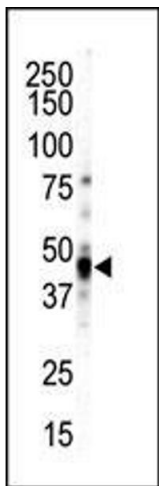
**Immunohistochemistry (Paraffin-embedded Sections)**

**Image 1.** Formalin-fixed and paraffin-embedded human cancer tissue (hepatocarcinoma) reacted with the primary antibody, which was peroxidase-conjugated to the secondary antibody, followed by DAB staining. This data demonstrates the use of this antibody for immunohistochemistry; clinical relevance has not been evaluated.



**Immunohistochemistry (Paraffin-embedded Sections)**

**Image 2.** Formalin-fixed and paraffin-embedded human hepatocarcinoma tissue reacted with CAMK1-like Antibody (C-term) , which was peroxidase-conjugated to the secondary antibody, followed by DAB staining. This data demonstrates the use of this antibody for immunohistochemistry; clinical relevance has not been evaluated.



**Western Blotting**

**Image 3.** Western blot analysis of anti-CAMK1-like C-term Pab in NCIH460 cell lysate. CAMK1-like (arrow) was detected using purified Pab. Secondary HRP-anti-rabbit was used for signal visualization with chemiluminescence.