

Datasheet for ABIN359399  
**anti-CAMK1 antibody (C-Term)**

## 3 Images

[Go to Product page](#)

## Overview

Quantity:	0.4 mL
Target:	CAMK1
Binding Specificity:	C-Term
Reactivity:	Human, Mouse, Rat, Primate
Host:	Rabbit
Clonality:	Polyclonal
Conjugate:	This CAMK1 antibody is un-conjugated
Application:	Western Blotting (WB), Immunohistochemistry (Paraffin-embedded Sections) (IHC (p)), Enzyme Immunoassay (EIA)

## Product Details

Immunogen:	This antibody is generated from rabbits immunized with a KLH conjugated synthetic peptide selected from the C-terminal region of human CAMK1.
Isotype:	Ig Fraction
Specificity:	This antibody detects CAMK1 at C-term.
Purification:	Protein G column, eluted with high and low pH buffers and neutralized immediately, followed by dialysis against PBS.

## Target Details

Target:	CAMK1
Alternative Name:	CAMK1 ( <a href="#">CAMK1 Products</a> )

## Target Details

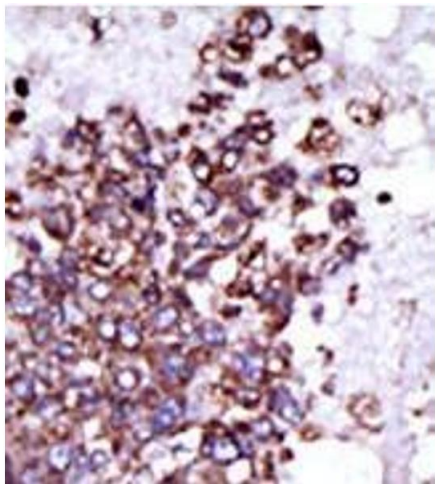
Background:	Calcium/calmodulin-dependent protein kinase I is expressed in many tissues and is a component of a calmodulin-dependent protein kinase cascade. Calcium/calmodulin directly activates calcium/calmodulin-dependent protein kinase I by binding to the enzyme and indirectly promotes the phosphorylation and synergistic activation of the enzyme by calcium/calmodulin-dependent protein kinase I kinase.Synonyms: CaM kinase I, CaM kinase I alpha, CaM-KI, CaMKI-alpha, Calcium/calmodulin-dependent protein kinase type 1
Molecular Weight:	41337 Da
Gene ID:	8536, 9606
UniProt:	<a href="#">Q14012</a>
Pathways:	<a href="#">Myometrial Relaxation and Contraction</a> , <a href="#">Regulation of Muscle Cell Differentiation</a> , <a href="#">Smooth Muscle Cell Migration</a>

## Application Details

Application Notes:	ELISA 1: 1,000. Western blot 1: 100 - 1: 500. Immunohistochemistry 1: 50 - 1: 100. Other applications not tested. Optimal dilutions are dependent on conditions and should be determined by the user.
Restrictions:	For Research Use only

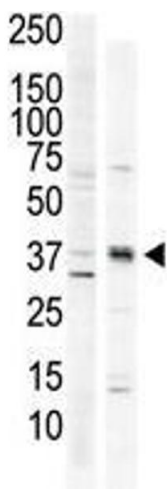
## Handling

Format:	Liquid
Concentration:	0.25 mg/mL
Buffer:	PBS with 0.09 % (W/V) sodium azide
Preservative:	Sodium azide
Precaution of Use:	This product contains sodium azide: a POISONOUS AND HAZARDOUS SUBSTANCE which should be handled by trained staff only.
Handling Advice:	Avoid repeated freezing and thawing.
Storage:	4 °C/-20 °C
Storage Comment:	Store the antibody at 2 - 8 °C up to one month or (in aliquots) at -20 °C for longer.



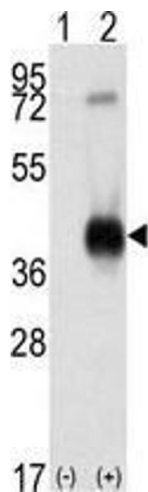
**Immunohistochemistry (Paraffin-embedded Sections)**

**Image 1.** Formalin-fixed and paraffin-embedded human cancer tissue (hepatocarcinoma) reacted with the primary antibody, which was peroxidase-conjugated to the secondary antibody, followed by DAB staining. This data demonstrates the use of this antibody for immunohistochemistry; clinical relevance has not been evaluated.



**Western Blotting**

**Image 2.** The anti-CAMK1 C-term Pab is used in Western blot to detect CAMK1 in HeLa cell lysate (lane 1) and primate brain tissue lysate (lane 2).



**Western Blotting**

**Image 3.** Western blot analysis of CAMK1 (arrow) using rabbit polyclonal CAMK1 Antibody (C-term) . 293 cell lysates (2 µg/lane) either nontransfected (Lane 1) or transiently transfected with the CAMK1 gene (Lane 2) (Origene Technologies).