

Datasheet for ABIN359403

anti-CAMK2D antibody (C-Term)**3** Images[Go to Product page](#)

Overview

Quantity:	0.4 mL
Target:	CAMK2D
Binding Specificity:	C-Term
Reactivity:	Human, Primate
Host:	Rabbit
Clonality:	Polyclonal
Conjugate:	This CAMK2D antibody is un-conjugated
Application:	Western Blotting (WB), Immunohistochemistry (Paraffin-embedded Sections) (IHC (p)), Enzyme Immunoassay (EIA)

Product Details

Immunogen:	This antibody is generated from rabbits immunized with a KLH conjugated synthetic peptide selected from the C-terminal region of human CAMK2 delta.
Isotype:	Ig Fraction
Specificity:	This antibody detects CAMK2D at C-term.
Purification:	Protein G column, eluted with high and low pH buffers and neutralized immediately, followed by dialysis against PBS.

Target Details

Target:	CAMK2D
Alternative Name:	CAMK2D (CAMK2D Products)

Target Details

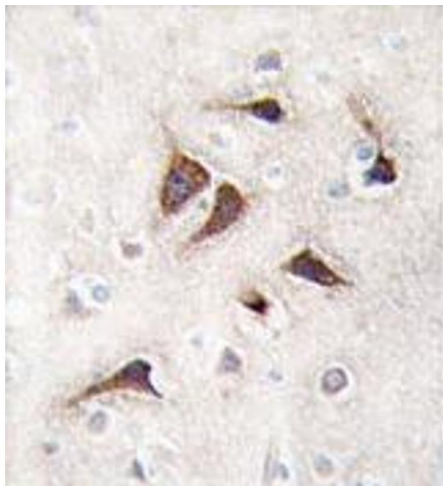
Background:	CaM-kinase II (CAMK2) is a prominent Ser/Thr protein kinase in the central nervous system that may function in long-term potentiation and neurotransmitter release. Likely autophosphorylation of Thr-286 allows the kinase to switch from a calmodulin-dependent to a calmodulin-independent state. CAMK2 is composed of four different chains: alpha, beta, gamma, and delta. The different isoforms assemble into homo- or heteromultimeric holoenzymes composed of 8 to 12 subunits. Expression of CAMK2 delta is significantly increased in patients suffering from dilated cardiomyopathy. Synonyms: CAMKD, CaM kinase II subunit delta, CaM-kinase II delta chain, CaMK-II subunit delta, Calcium/calmodulin-dependent protein kinase type II delta chain
Molecular Weight:	56297 Da
Gene ID:	817, 9606
UniProt:	Q13557
Pathways:	WNT Signaling , Interferon-gamma Pathway , Myometrial Relaxation and Contraction , Smooth Muscle Cell Migration

Application Details

Application Notes:	ELISA 1: 1,000. Western blot 1: 100 - 1: 500. Immunohistochemistry 1: 50 - 1: 100. Other applications not tested. Optimal dilutions are dependent on conditions and should be determined by the user.
Restrictions:	For Research Use only

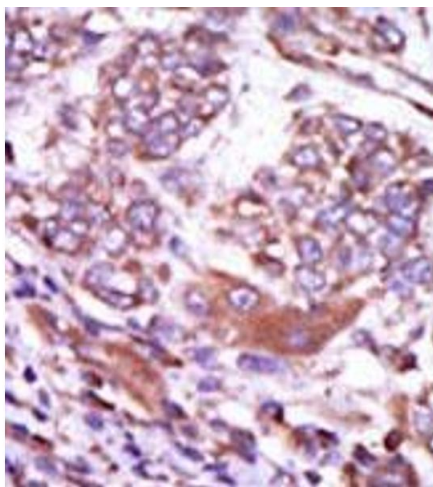
Handling

Format:	Liquid
Concentration:	0.25 mg/mL
Buffer:	PBS with 0.09 % (W/V) sodium azide
Preservative:	Sodium azide
Precaution of Use:	This product contains sodium azide: a POISONOUS AND HAZARDOUS SUBSTANCE which should be handled by trained staff only.
Handling Advice:	Avoid repeated freezing and thawing.
Storage:	4 °C/-20 °C
Storage Comment:	Store the antibody at 2 - 8 °C up to one month or (in aliquots) at -20 °C for longer.



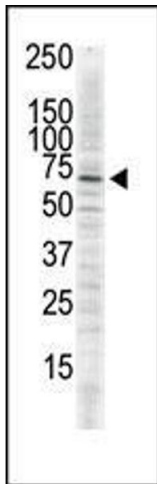
Immunohistochemistry (Paraffin-embedded Sections)

Image 1. Formalin-fixed and paraffin-embedded human brain tissue reacted with CAMK2 delta Antibody (C-term) , which was peroxidase-conjugated to the secondary antibody, followed by DAB staining. This data demonstrates the use of this antibody for immunohistochemistry; clinical relevance has not been evaluated.



Immunohistochemistry (Paraffin-embedded Sections)

Image 2. Formalin-fixed and paraffin-embedded human cancer tissue (hepatocarcinoma) reacted with the primary antibody, which was peroxidase-conjugated to the secondary antibody, followed by AEC staining. This data demonstrates the use of this antibody for immunohistochemistry; clinical relevance has not been evaluated.



Western Blotting

Image 3. The anti-CAMK2delta C-term Pab is used in Western blot to detect CAMK2 delta in serum-starved HeLa cell lysate.