

Datasheet for ABIN359407  
**anti-CASK antibody (C-Term)**[Go to Product page](#)

## 2 Images

## Overview

Quantity:	0.4 mL
Target:	CASK
Binding Specificity:	C-Term
Reactivity:	Human, Mouse
Host:	Rabbit
Clonality:	Polyclonal
Conjugate:	This CASK antibody is un-conjugated
Application:	Western Blotting (WB), Immunohistochemistry (Paraffin-embedded Sections) (IHC (p)), Enzyme Immunoassay (EIA)

## Product Details

Immunogen:	This antibody is generated from rabbits immunized with a KLH conjugated synthetic peptide selected from the C-terminal region of human CASK.
Isotype:	Ig Fraction
Specificity:	This antibody detects Cask at C-term.
Purification:	Protein G Chromatography, eluted with high and low pH buffers and neutralized immediately, followed by dialysis against PBS.

## Target Details

Target:	CASK
Alternative Name:	CASK ( <a href="#">CASK Products</a> )

## Target Details

Background:	Protein kinases are enzymes that transfer a phosphate group from a phosphate donor, generally the $\gamma$ phosphate of ATP, onto an acceptor amino acid in a substrate protein. By this basic mechanism, protein kinases mediate most of the signal transduction in eukaryotic cells, regulating cellular metabolism, transcription, cell cycle progression, cytoskeletal rearrangement and cell movement, apoptosis, and differentiation. With more than 500 gene products, the protein kinase family is one of the largest families of proteins in eukaryotes. The family has been classified in 8 major groups based on sequence comparison of their tyrosine (PTK) or serine/threonine (STK) kinase catalytic domains. The calcium/calmodulin-dependent kinase (CAMK) group consists of 75 kinases regulated by $\text{Ca}^{2+}$ /CaM and close relative family (CAMK, CAMKL, DAPK, MAPKAPK).Synonyms: Calcium/calmodulin-dependent serine protein kinase, LIN2, Lin-2 homolog, Peripheral plasma membrane protein CASK
Molecular Weight:	105064 Da
Gene ID:	8573, 9606
UniProt:	<a href="#">O14936</a>
Pathways:	<a href="#">Synaptic Vesicle Exocytosis</a>

## Application Details

Application Notes:	ELISA: 1/1,000. Western blot: 1/100-1/500. Immunohistochemistry 1/50-1/100. Other applications not tested. Optimal dilutions are dependent on conditions and should be determined by the user.
Restrictions:	For Research Use only

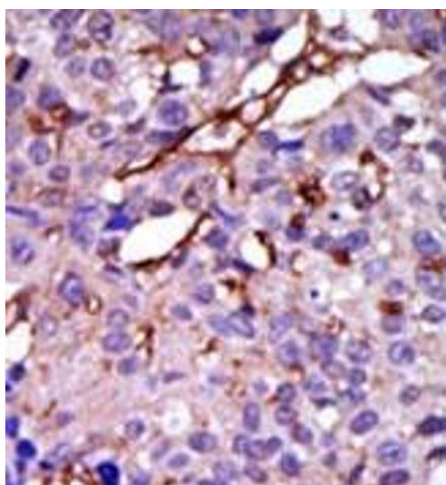
## Handling

Format:	Liquid
Concentration:	0.25 mg/mL
Buffer:	PBS with 0.09 % (W/V) Sodium Azide as preservative.
Preservative:	Sodium azide
Precaution of Use:	This product contains sodium azide: a POISONOUS AND HAZARDOUS SUBSTANCE which should be handled by trained staff only.
Handling Advice:	Avoid repeated freezing and thawing.
Storage:	4 °C/-20 °C

## Handling

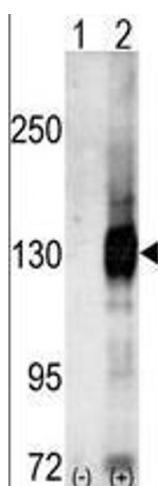
Storage Comment: Store the antibody undiluted at 2-8 °C for one month or (in aliquots) at -20 °C for longer.

## Images



### Immunohistochemistry (Paraffin-embedded Sections)

**Image 1.** Formalin-fixed and paraffin-embedded human cancer tissue (breast carcinoma) reacted with the primary antibody, which was peroxidase-conjugated to the secondary antibody, followed by DAB staining. This data demonstrates the use of this antibody for immunohistochemistry; clinical relevance has not been evaluated.



### Western Blotting

**Image 2.** Western blot analysis of CASK (arrow) using Cask Antibody (C-term) . 293 cell lysates (2 µg/lane) either nontransfected (Lane 1) or transiently transfected with the CASK gene (Lane 2) (Origene Technologies).