



[Go to Product page](#)

Datasheet for ABIN359414
anti-DCLK1 antibody (C-Term)

2 Images

Overview

Quantity:	200 µL
Target:	DCLK1
Binding Specificity:	C-Term
Reactivity:	Human, Mouse
Host:	Rabbit
Clonality:	Polyclonal
Conjugate:	This DCLK1 antibody is un-conjugated
Application:	Western Blotting (WB), Immunohistochemistry (Paraffin-embedded Sections) (IHC (p)), Enzyme Immunoassay (EIA)

Product Details

Immunogen:	This antibody is generated from rabbits immunized with a KLH conjugated synthetic peptide selected from the C-terminal region of human DCAMKL1.
Isotype:	Ig Fraction
Specificity:	This antibody detects DCAMKL1 at C-term.
Purification:	Protein G Chromatography eluted with high and low pH buffers and neutralized immediately, followed by dialysis against PBS.

Target Details

Target:	DCLK1
Alternative Name:	Doublecortin-Like Kinase 1 (DCLK1 Products)

Target Details

Background: Doublecortin-like kinase (DCAMKL1)(Ser/Thr protein kinase family) is essential for proper neurogenesis, neuronal migration, and axonal wiring. DCAMKL1 is involved in a calcium-signaling pathway controlling neuronal migration in the developing brain, and participates in functions of the mature nervous system. DCAMKL1 protein shares high homology with doublecortin (DCX). DCLK, but not DCX, is highly expressed in regions of active neurogenesis in the neocortex and cerebellum. DCAMKL1 controls mitotic division by regulating spindle formation and also determines the fate of neural progenitors during cortical neurogenesis. Synonyms: CLICK1, DCAMKL1, DCDC3A, DCKL1, DCLK, KIAA0369, Serine/threonine-protein kinase DCLK1

Molecular Weight: 82223 Da

Gene ID: 9201, 9606

UniProt: [O15075](#)

Application Details

Application Notes: ELISA: 1/1,000. Western blot: 1/100-1/500. Immunohistochemistry: 1/10-1/50.
Other applications not tested.
Optimal dilutions are dependent on conditions and should be determined by the user.

Restrictions: For Research Use only

Handling

Format: Liquid

Concentration: 0.25 mg/mL

Buffer: PBS with 0.09 % (W/V) Sodium Azide as preservative.

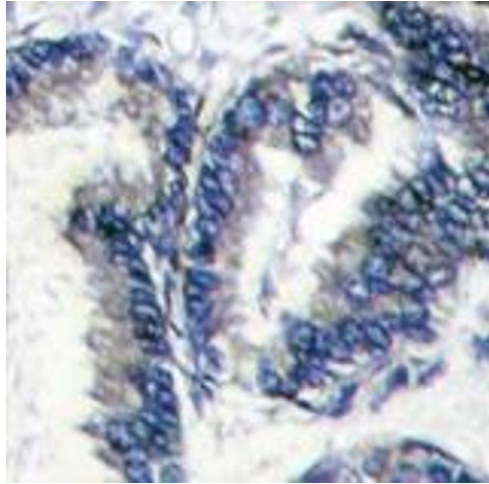
Preservative: Sodium azide

Precaution of Use: This product contains sodium azide: a POISONOUS AND HAZARDOUS SUBSTANCE which should be handled by trained staff only.

Handling Advice: Avoid repeated freezing and thawing.

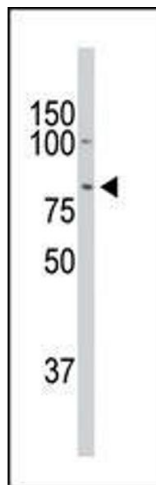
Storage: 4 °C/-20 °C

Storage Comment: Store the antibody undiluted at 2-8 °C for one month or (in aliquots) at -20 °C for longer.



Immunohistochemistry (Paraffin-embedded Sections)

Image 1. Formalin-fixed and paraffin-embedded human hepatocarcinoma reacted with DCAMKL1 Antibody (C-term) , which was peroxidase-conjugated to the secondary antibody, followed by DAB staining. This data demonstrates the use of this antibody for immunohistochemistry; clinical relevance has not been evaluated.



Western Blotting

Image 2. The DCAMKL1 Antibody (C-term) is used in Western blot to detect DCAMKL1 in mouse heart tissue lysate.