



[Go to Product page](#)

Datasheet for ABIN359448
anti-STK31 antibody (N-Term)

2 Images

Overview

Quantity:	0.4 mL
Target:	STK31
Binding Specificity:	N-Term
Reactivity:	Human, Rat
Host:	Rabbit
Clonality:	Polyclonal
Conjugate:	This STK31 antibody is un-conjugated
Application:	Western Blotting (WB), Immunohistochemistry (Paraffin-embedded Sections) (IHC (p)), Enzyme Immunoassay (EIA)

Product Details

Immunogen:	This antibody is generated from rabbits immunized with a KLH conjugated synthetic peptide selected from the N-terminal region of human STK31.
Isotype:	Ig Fraction
Purification:	Protein G column, eluted with high and low pH buffers and neutralized immediately, followed by dialysis against PBS.

Target Details

Target:	STK31
Alternative Name:	STK31 (STK31 Products)
Background:	This gene is similar to a mouse gene that encodes a putative protein kinase with a tudor

Target Details

domain, and shows testis-specific expression. Alternative splicing results in multiple transcript variants encoding different isoforms. Synonyms: NYD-SPK, SGK396, Serine/threonine-protein kinase 31, Sugen kinase 396, TDRD8

Molecular Weight: 115729 Da

Gene ID: 56164, 9606

UniProt: [Q9BXU1](#)

Application Details

Application Notes: ELISA 1: 1,000. Western blotting 1: 100 - 1: 500. Immunohistochemistry 1: 50 - 1: 100.
Other applications not tested.
Optimal dilutions are dependent on conditions and should be determined by the user.

Restrictions: For Research Use only

Handling

Format: Liquid

Concentration: 0.25 mg/mL

Buffer: PBS with 0.09 % (W/V) sodium azide

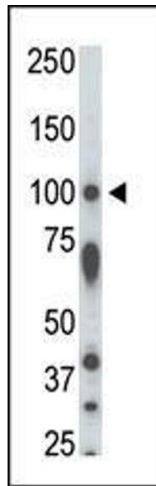
Preservative: Sodium azide

Precaution of Use: This product contains sodium azide: a POISONOUS AND HAZARDOUS SUBSTANCE which should be handled by trained staff only.

Handling Advice: Avoid repeated freezing and thawing.

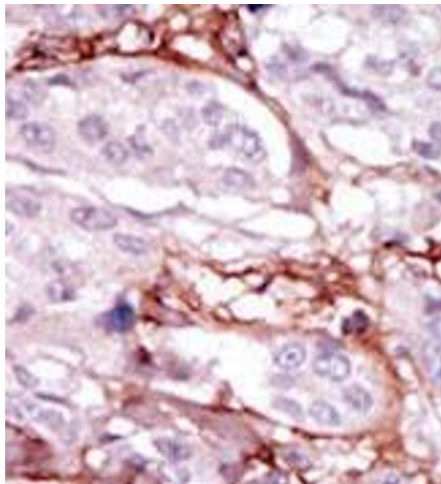
Storage: 4 °C/-20 °C

Storage Comment: Store the antibody at 2 - 8 °C up to one month or (in aliquots) at -20 °C for longer.



Western Blotting

Image 1. The anti-STK31 Pab is used in Western blot to detect STK31 in rat testis tissue lysate.



Immunohistochemistry (Paraffin-embedded Sections)

Image 2. Formalin-fixed and paraffin-embedded human cancer tissue (breast carcinoma) reacted with the primary antibody, which was peroxidase-conjugated to the secondary antibody, followed by DAB staining. This data demonstrates the use of this antibody for immunohistochemistry; clinical relevance has not been evaluated.