

Datasheet for ABIN359451
anti-STK35 antibody (Middle Region)[Go to Product page](#)

2 Images

Overview

Quantity:	0.4 mL
Target:	STK35
Binding Specificity:	Middle Region
Reactivity:	Human, Mouse
Host:	Rabbit
Clonality:	Polyclonal
Conjugate:	This STK35 antibody is un-conjugated
Application:	Western Blotting (WB), Immunohistochemistry (Paraffin-embedded Sections) (IHC (p)), Enzyme Immunoassay (EIA)

Product Details

Immunogen:	This antibody is generated from rabbits immunized with a KLH conjugated synthetic peptide selected from the central region of human STK35.
Isotype:	Ig Fraction
Specificity:	This antibody detects STK35 at center.
Purification:	Protein G column, eluted with high and low pH buffers and neutralized immediately, followed by dialysis against PBS.

Target Details

Target:	STK35
Alternative Name:	STK35 (STK35 Products)

Target Details

Background: STK35 can interact with PDLIM1/CLP-36 in the cytoplasm and localize to actin stress fibers. The encoded kinase may be a regulator of actin stress fibers in nonmuscle cells. This protein has also been found in the nucleus. Synonyms: CLIK-1, CLIK1, CLP-36-interacting kinase 1, PDIK1, PDLIM1-interacting kinase 1, STK35L1, Serine/threonine-protein kinase 35, Serine/threonine-protein kinase 35 L1

Molecular Weight: 44573 Da

Gene ID: 140901, 9606

UniProt: [Q8TDR2](#)

Application Details

Application Notes: ELISA 1: 1,000. Western blot 1: 100 - 1: 500. Immunohistochemistry 1: 50 - 1: 100. Other applications not tested. Optimal dilutions are dependent on conditions and should be determined by the user.

Restrictions: For Research Use only

Handling

Format: Liquid

Concentration: 0.25 mg/mL

Buffer: PBS with 0.09 % (W/V) sodium azide

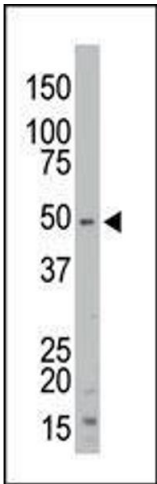
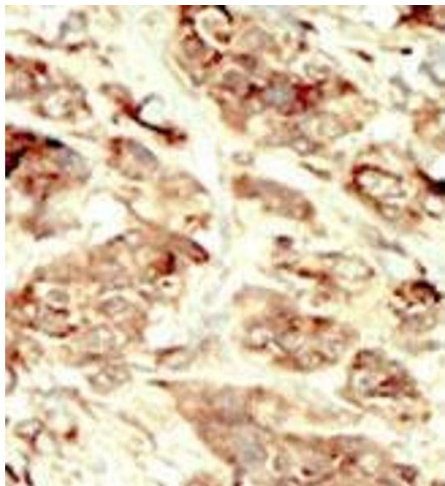
Preservative: Sodium azide

Precaution of Use: This product contains sodium azide: a POISONOUS AND HAZARDOUS SUBSTANCE which should be handled by trained staff only.

Handling Advice: Avoid repeated freezing and thawing.

Storage: 4 °C/-20 °C

Storage Comment: Store the antibody at 2 - 8 °C up to one month or (in aliquots) at -20 °C for longer.



Immunohistochemistry (Paraffin-embedded Sections)

Image 1. Formalin-fixed and paraffin-embedded human cancer tissue (breast carcinoma) reacted with the primary antibody, which was peroxidase-conjugated to the secondary antibody, followed by DAB staining. This data demonstrates the use of this antibody for immunohistochemistry; clinical relevance has not been evaluated.

Western Blotting

Image 2. The anti-STK35 Pab is used in Western blot to detect STK35 in mouse kidney tissue lysate.