

Datasheet for ABIN359470
anti-CAMK1G antibody (C-Term)

3 Images

[Go to Product page](#)

Overview

Quantity:	0.4 mL
Target:	CAMK1G
Binding Specificity:	C-Term
Reactivity:	Human
Host:	Rabbit
Clonality:	Polyclonal
Conjugate:	This CAMK1G antibody is un-conjugated
Application:	Western Blotting (WB), Immunohistochemistry (Paraffin-embedded Sections) (IHC (p)), Enzyme Immunoassay (EIA)

Product Details

Immunogen:	Rabbits were immunized with a KLH conjugated synthetic peptide selected from the C- terminal region of human CaMKIG.
Isotype:	Ig Fraction
Specificity:	This antibody detects CaMKI gamma at C-term.
Purification:	Protein G column, eluted with high and low pH buffers and neutralized immediately, followed by dialysis against PBS.

Target Details

Target:	CAMK1G
Alternative Name:	CAMK1G (CAMK1G Products)

Target Details

Background: Ca²⁺/calmodulin-dependent protein kinase I (CaMKI) constitutes a family of closely related isoforms (alpha, beta and gamma). CLICK-III/CaMKIgamma is a novel membrane-anchored neuronal Ca²⁺/calmodulin-dependent protein kinase. AMKIgamma is abundant in neurons, particularly in the amygdala and ventromedial hypothalamus. Like the other CaMKI isoforms, full activation of CLICK-III/CaMKIgamma requires both Ca(2+)/CaM and phosphorylation by CaMKK. Synonyms: CLICK III, CaM kinase I gamma, CaM kinase IG, CaM-KI gamma, CaMK-like CREB kinase III, CaMKI gamma, CaMKIG, Calcium/calmodulin-dependent protein kinase type 1G, VWS1

Molecular Weight: 53128 Da

Gene ID: 57172, 9606

UniProt: [Q96NX5](#)

Application Details

Application Notes: ELISA 1: 1,000. Western blot 1: 100 - 1: 500. Immunohistochemistry 1: 50 - 1: 100.
Other applications not tested.
Optimal dilutions are dependent on conditions and should be determined by the user.

Restrictions: For Research Use only

Handling

Format: Liquid

Concentration: 0.25 mg/mL

Buffer: PBS with 0.09 % (W/V) sodium azide

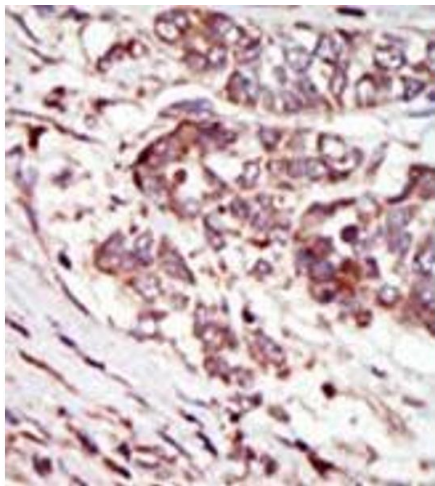
Preservative: Sodium azide

Precaution of Use: This product contains sodium azide: a POISONOUS AND HAZARDOUS SUBSTANCE which should be handled by trained staff only.

Handling Advice: Avoid repeated freezing and thawing.

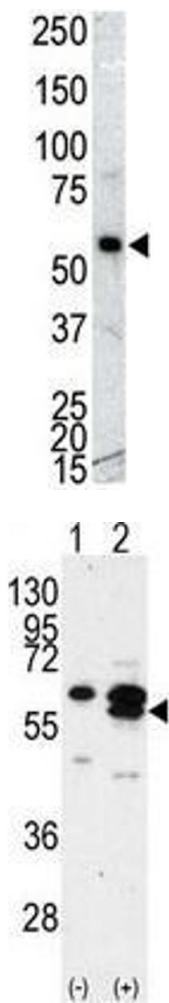
Storage: 4 °C/-20 °C

Storage Comment: Store the antibody at 2 - 8 °C up to one month or (in aliquots) at -20 °C for longer.



Immunohistochemistry (Paraffin-embedded Sections)

Image 1. Formalin-fixed and paraffin-embedded human cancer tissue (hepatocarcinoma) reacted with the primary antibody, which was peroxidase-conjugated to the secondary antibody, followed by AEC staining. This data demonstrates the use of this antibody for immunohistochemistry; clinical relevance has not been evaluated.



Western Blotting

Image 2. Western blot analysis of anti-CAMK 1G Pab in NCI-H460 cell lysate. CAMK 1G (arrow) was detected using purified Pab. Secondary HRP-anti-rabbit was used for signal visualization with chemiluminescence.

Western Blotting

Image 3. Western blot analysis of CAMK1G (arrow) using rabbit polyclonal CAMK1G Antibody (C-term) . 293 cell lysates (2 µg/lane) either nontransfected (Lane 1) or transiently transfected with the CAMK1G gene (Lane 2) (Origene Technologies).