

Datasheet for ABIN359497

## anti-MEOX1 antibody (N-Term)



[Go to Product page](#)

### 1 Image

#### Overview

Quantity:	0.4 mL
Target:	MEOX1
Binding Specificity:	N-Term
Reactivity:	Human
Host:	Rabbit
Clonality:	Polyclonal
Conjugate:	This MEOX1 antibody is un-conjugated
Application:	Western Blotting (WB), Enzyme Immunoassay (EIA)

#### Product Details

Immunogen:	This antibody is generated from rabbits immunized with a KLH conjugated synthetic peptide selected from the N-terminal region of human MEOX1.
Isotype:	Ig Fraction
Specificity:	This antibody detects MOX1 at N-term.
Purification:	Protein A column, followed by peptide affinity purification.

#### Target Details

Target:	MEOX1
Alternative Name:	MEOX1 ( <a href="#">MEOX1 Products</a> )
Background:	Meox1 is a member of a subfamily of non-clustered, diverged, antennapedia-like homeobox-

## Target Details

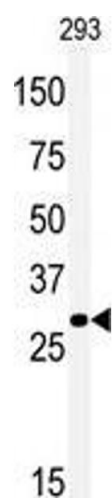
	containing genes. This protein may play a role in the molecular signaling network regulating somite development.Synonyms: Homeobox protein MOX-1, MOX1
Molecular Weight:	27866 Da
Gene ID:	4222, 9606
UniProt:	<a href="#">P50221</a>
Pathways:	<a href="#">Chromatin Binding</a>

## Application Details

Application Notes:	ELISA 1: 1,000. Western blot 1: 100 - 1: 250. Other applications not tested. Optimal dilutions are dependent on conditions and should be determined by the user.
Restrictions:	For Research Use only

## Handling

Format:	Liquid
Concentration:	0.25 mg/mL
Buffer:	PBS with 0.09 % (W/V) sodium azide
Preservative:	Sodium azide
Precaution of Use:	This product contains sodium azide: a POISONOUS AND HAZARDOUS SUBSTANCE which should be handled by trained staff only.
Handling Advice:	Avoid repeated freezing and thawing.
Storage:	4 °C/-20 °C
Storage Comment:	Store the antibody at 2 - 8 °C up to one month or (in aliquots) at -20 °C for longer.



Western Blotting

**Image 1.** Western blot analysis of anti-Meox1 Antibody (N-term) in 293 cell line lysates (35 µg/lane). Meox1 (arrow) was detected using the purified Pab (1:230 dilution).