



[Go to Product page](#)

Datasheet for ABIN359509  
**anti-NAE1 antibody (C-Term)**

3 Images

### Overview

Quantity:	0.4 mL
Target:	NAE1
Binding Specificity:	C-Term
Reactivity:	Human
Host:	Rabbit
Clonality:	Polyclonal
Conjugate:	This NAE1 antibody is un-conjugated
Application:	Western Blotting (WB), Immunohistochemistry (Paraffin-embedded Sections) (IHC (p)), Enzyme Immunoassay (EIA)

### Product Details

Immunogen:	This antibody is generated from rabbits immunized with a KLH conjugated synthetic peptide selected from the C-terminal region of human APPBP1.
Isotype:	Ig Fraction
Specificity:	This antibody detects NAE1 (APPBP1) at C-term.
Purification:	Protein G column, eluted with high and low pH buffers and neutralized immediately, followed by dialysis against PBS.

### Target Details

Target:	NAE1
Alternative Name:	APPBP1 ( <a href="#">NAE1 Products</a> )

## Target Details

---

**Background:** APPBP1 binds to the beta-amyloid precursor protein, a cell surface protein with signal-transducing properties thought to play a role in the pathogenesis of Alzheimer's disease. In addition, this protein can form a heterodimer with UBE1C and bind and activate NEDD8, a ubiquitin-like protein. APPBP1 is required for cell cycle progression through the S/M checkpoint. Synonyms: Amyloid beta precursor protein-binding protein 1, Amyloid protein-binding protein 1, HPP1, NAE1

**Molecular Weight:** 60252 Da

**Gene ID:** 8883, 9606

**UniProt:** [Q13564](#)

## Application Details

---

**Application Notes:** ELISA 1: 1,000. Western blot 1: 50 - 1: 100. Immunohistochemistry on paraffin sections 1: 50 - 1: 100.  
Other applications not tested.  
Optimal dilutions are dependent on conditions and should be determined by the user.

**Restrictions:** For Research Use only

## Handling

---

**Format:** Liquid

**Concentration:** 0.25 mg/mL

**Buffer:** PBS with 0.09 % (W/V) sodium azide

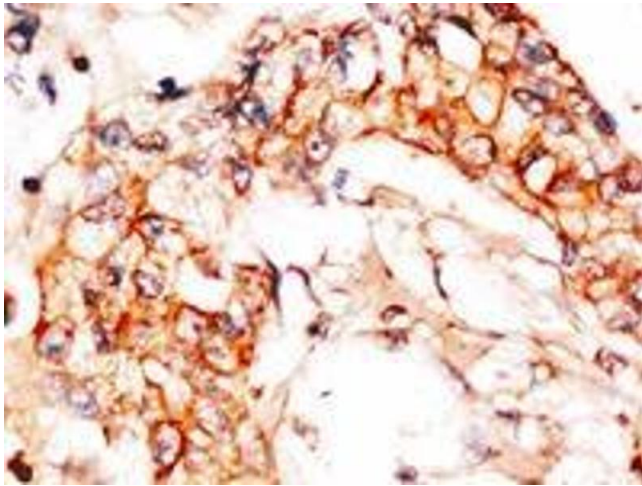
**Preservative:** Sodium azide

**Precaution of Use:** This product contains sodium azide: a POISONOUS AND HAZARDOUS SUBSTANCE which should be handled by trained staff only.

**Handling Advice:** Avoid repeated freezing and thawing.

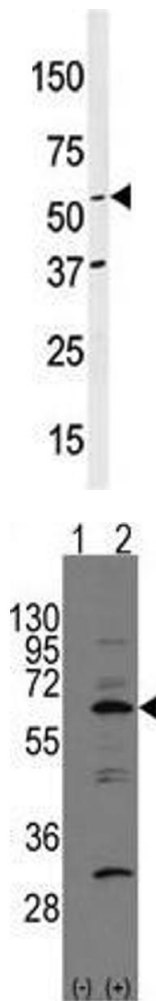
**Storage:** 4 °C/-20 °C

**Storage Comment:** Store the antibody at 2 - 8 °C up to one month or (in aliquots) at -20 °C for longer.



### Immunohistochemistry (Paraffin-embedded Sections)

**Image 1.** Formalin-fixed and paraffin-embedded human breast carcinoma reacted with anti-APPBP1 (C-term), which was peroxidase-conjugated to the secondary antibody, followed by DAB staining. This data demonstrates the use of this antibody for immunohistochemistry; clinical relevance has not been evaluated.



### Western Blotting

**Image 2.** Western blot analysis of anti-APPBP1 (C-term) in mouse brain tissue lysates (35 µg/lane). APPBP1 (arrow) was detected using the purified Pab (1:60 dilution).

### Western Blotting

**Image 3.** Western blot analysis of APP-BP1 (arrow) using rabbit polyclonal APP-BP1 Antibody (C-term). 293 cell lysates (2 µg/lane) either nontransfected (Lane 1) or transiently transfected with the APP-BP1 gene (Lane 2) (Origene Technologies).