

Datasheet for ABIN359550

anti-Thymidine Phosphorylase antibody (Middle Region)



[Go to Product page](#)

2 Images

Overview

Quantity:	0.4 mL
Target:	Thymidine Phosphorylase (TYMP)
Binding Specificity:	Middle Region
Reactivity:	Human
Host:	Rabbit
Clonality:	Polyclonal
Conjugate:	This Thymidine Phosphorylase antibody is un-conjugated
Application:	Western Blotting (WB), Immunohistochemistry (Paraffin-embedded Sections) (IHC (p)), Enzyme Immunoassay (EIA)

Product Details

Immunogen:	This antibody is generated from rabbits immunized with a KLH conjugated synthetic peptide at the Center of human ECGF1.
Isotype:	Ig Fraction
Specificity:	This antibody reacts to ECGF1.
Purification:	Protein A column, followed by peptide affinity purification

Target Details

Target:	Thymidine Phosphorylase (TYMP)
Abstract:	TYMP Products

Target Details

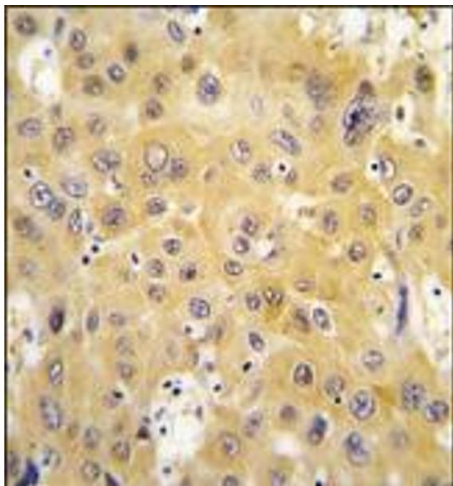
Background:	ECGF1 is an angiogenic factor which promotes angiogenesis in vivo and stimulates the in vitro growth of a variety of endothelial cells. It has a highly restricted target cell specificity acting only on endothelial cells. Mutations in the gene encoding ECGF1 have been associated with mitochondrial neurogastrointestinal encephalomyopathy.Synonyms: ECGF1, Gliostatin, PD-ECGF, Platelet-derived endothelial cell growth factor, TdRPase
Gene ID:	1890, 9606
UniProt:	P19971
Pathways:	Signaling Events mediated by VEGFR1 and VEGFR2

Application Details

Application Notes:	ELISA: 1/1,000. Western blotting: 1/50 - 1/100. Immunohistochemistry: 1/10 - 1/50. Other applications not tested. Optimal dilutions are dependent on conditions and should be determined by the user.
Restrictions:	For Research Use only

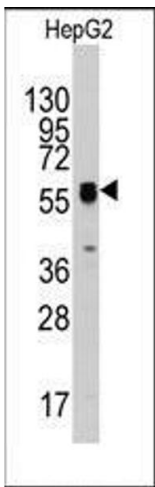
Handling

Format:	Liquid
Concentration:	0.25 mg/mL
Buffer:	PBS with 0.09 % (W/V) sodium azide
Preservative:	Sodium azide
Precaution of Use:	This product contains sodium azide: a POISONOUS AND HAZARDOUS SUBSTANCE which should be handled by trained staff only.
Handling Advice:	Avoid repeated freezing and thawing.
Storage:	4 °C/-20 °C
Storage Comment:	Store the antibody undiluted at 2-8 °C for one month or (in aliquots) at-20 °C for longer.



Immunohistochemistry (Paraffin-embedded Sections)

Image 1. Formalin-fixed and paraffin-embedded human hepatocarcinoma tissue reacted with ECGF1 antibody (Center), which was peroxidase-conjugated to the secondary antibody, followed by DAB staining.



Western Blotting

Image 2. Western blot analysis of anti-ECGF1(Center) Pab in HepG2 cell line lysates (35ug/lane). ECGF1(arrow) was detected using the purified Pab (1:60 dilution).