

Datasheet for ABIN359553
anti-LEFTY1 antibody (C-Term)



[Go to Product page](#)

2 Images

Overview

Quantity:	0.4 mL
Target:	LEFTY1
Binding Specificity:	C-Term
Reactivity:	Human
Host:	Rabbit
Clonality:	Polyclonal
Conjugate:	This LEFTY1 antibody is un-conjugated
Application:	Western Blotting (WB), Immunohistochemistry (Paraffin-embedded Sections) (IHC (p)), Enzyme Immunoassay (EIA)

Product Details

Immunogen:	This antibody is generated from rabbits immunized with a KLH conjugated synthetic peptide at the C-term of human LEFTB.
Isotype:	Ig Fraction
Specificity:	This antibody reacts to Lefty (LEFTB).
Purification:	Prepared by Saturated Ammonium Sulfate (SAS) precipitation followed by dialysis against PBS

Target Details

Target:	LEFTY1
Alternative Name:	LEFTY1 (LEFTY1 Products)

Target Details

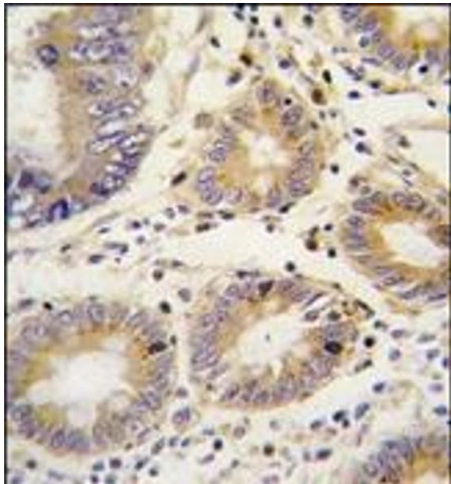
Background:	LEFTB is a member of the TGF-beta family of proteins. A similar secreted protein in mouse plays a role in left-right asymmetry determination of organ systems during development. Alternative processing of this protein can yield three different products.Synonyms: LEFTB, LEFTY1, LEFTYB, Left-right determination factor 1, Left-right determination factor B, Protein lefty-1, Protein lefty-B
Gene ID:	10637, 9606
UniProt:	O75610

Application Details

Application Notes:	ELISA: 1/1,000. Western blotting: 1/50 - 1/100. Immunohistochemistry: 1/10 - 1/50. Other applications not tested. Optimal dilutions are dependent on conditions and should be determined by the user.
Restrictions:	For Research Use only

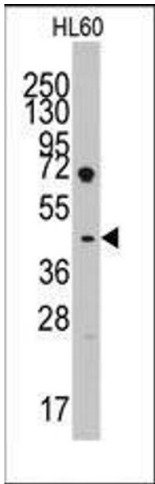
Handling

Format:	Liquid
Concentration:	0.25 mg/mL
Buffer:	PBS with 0.09 % (W/V) sodium azide
Preservative:	Sodium azide
Precaution of Use:	This product contains sodium azide: a POISONOUS AND HAZARDOUS SUBSTANCE which should be handled by trained staff only.
Handling Advice:	Avoid repeated freezing and thawing.
Storage:	4 °C/-20 °C
Storage Comment:	Store the antibody undiluted at 2-8 °C for one month or (in aliquots) at -20 °C for longer.



Immunohistochemistry (Paraffin-embedded Sections)

Image 1. Formalin-fixed and paraffin-embedded human colon carcinoma tissue reacted with LEFTB antibody (C-term), which was peroxidase-conjugated to the secondary antibody, followed by DAB staining.



Western Blotting

Image 2. Western blot analysis of anti-LEFTB(C-term) Pab in HL60 cell line lysates (35ug/lane). LEFTB(arrow) was detected using the purified Pab (1:60 dilution).