



[Go to Product page](#)

Datasheet for ABIN359582  
**anti-PTRF antibody (N-Term)**

2 Images

### Overview

Quantity:	0.4 mL
Target:	PTRF
Binding Specificity:	N-Term
Reactivity:	Human
Host:	Rabbit
Clonality:	Polyclonal
Conjugate:	This PTRF antibody is un-conjugated
Application:	Western Blotting (WB), Immunohistochemistry (Paraffin-embedded Sections) (IHC (p)), Enzyme Immunoassay (EIA)

### Product Details

Immunogen:	This antibody is generated from rabbits immunized with a KLH conjugated synthetic peptide selected from the N-terminal region of human PTRF.
Isotype:	Ig Fraction
Specificity:	This antibody reacts to PTRF.
Purification:	Prepared by Saturated Ammonium Sulfate (SAS) precipitation followed by dialysis against PBS

### Target Details

Target:	PTRF
Alternative Name:	PTRF ( <a href="#">PTRF Products</a> )

## Target Details

---

Background: Termination of transcription by RNA polymerase I involves pausing of transcription by TTF1, and the dissociation of the transcription complex, releasing pre-rRNA and RNA polymerase I from the template. PTRF is required for dissociation of the ternary transcription complex. Synonyms: Cavin-1, FKSG13, Polymerase I and transcript release factor

---

Gene ID: 284119, 9606

---

UniProt: [Q6NZI2](#)

---

## Application Details

---

Application Notes: ELISA: 1/1,000. Western blotting: 1/50 - 1/100. Immunohistochemistry: 1/10 - 1/50.  
Other applications not tested.  
Optimal dilutions are dependent on conditions and should be determined by the user.

---

Restrictions: For Research Use only

---

## Handling

---

Format: Liquid

---

Concentration: 0.25 mg/mL

---

Buffer: PBS with 0.09 % (W/V) sodium azide

---

Preservative: Sodium azide

---

Precaution of Use: This product contains sodium azide: a POISONOUS AND HAZARDOUS SUBSTANCE which should be handled by trained staff only.

---

Handling Advice: Avoid repeated freezing and thawing.

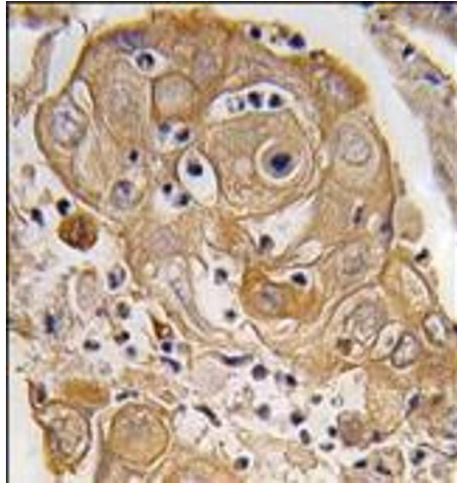
---

Storage: 4 °C/-20 °C

---

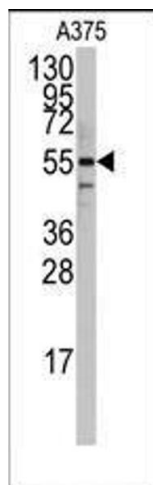
Storage Comment: Store the antibody undiluted at 2-8 °C for one month or (in aliquots) at -20 °C for longer.

---



### Immunohistochemistry (Paraffin-embedded Sections)

**Image 1.** Formalin-fixed and paraffin-embedded human lung carcinoma tissue reacted with PTRF antibody (N-term), which was peroxidase-conjugated to the secondary antibody, followed by DAB staining.



### Western Blotting

**Image 2.** Western blot analysis of anti-PTRF Antibody (N-term) in A375 cell line lysates (35ug/lane). PTRF(arrow) was detected using the purified Pab.